

Alzheimer's Disease Genetics

Mike Greicius, MD
 Medical Director
 Stanford Center for Memory Disorders
 Department of Neurology and Neurological Sciences

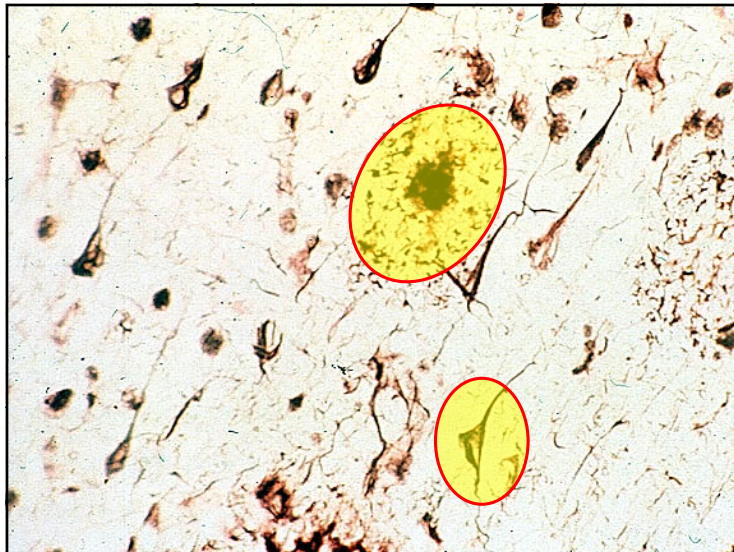
Genetics of AD

Autosomal dominant inherited (monogenic) forms

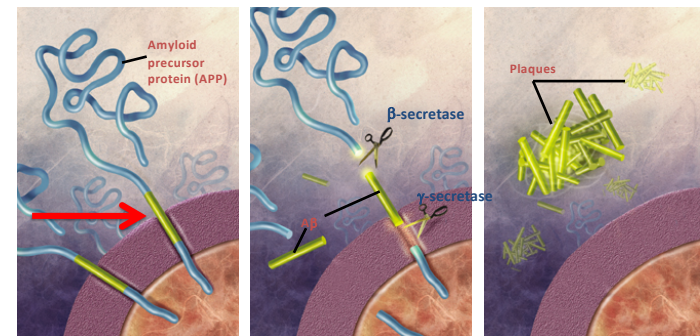
- early onset (30-60 yrs of age); < 1%
- amyloid precursor protein (APP)
 - presenilin 1 (PS1)
 - presenilin 2 (PS2)

Sporadic forms (genetic components variable)

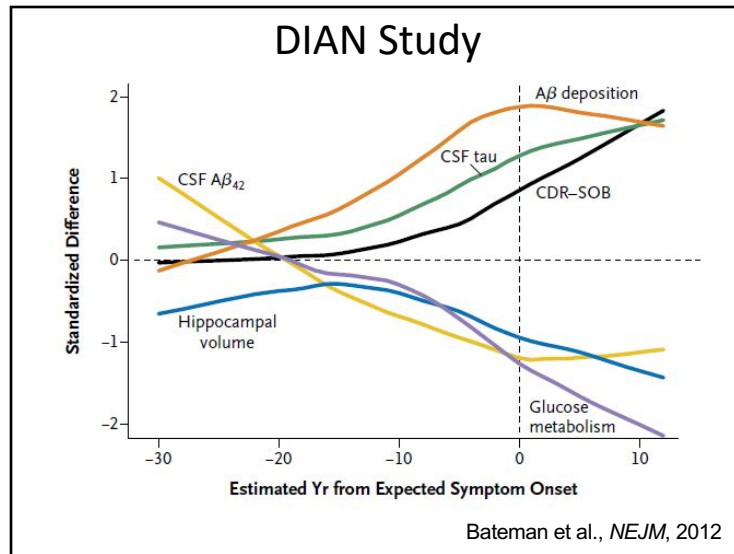
- late onset (60 + yrs of age)
- apolipoprotein E (APOE) (e4 isoform)
 - many other potential genes
 - genome-wide association studies (GWAS)
 - multigenic risk



Formation of Aβ peptides

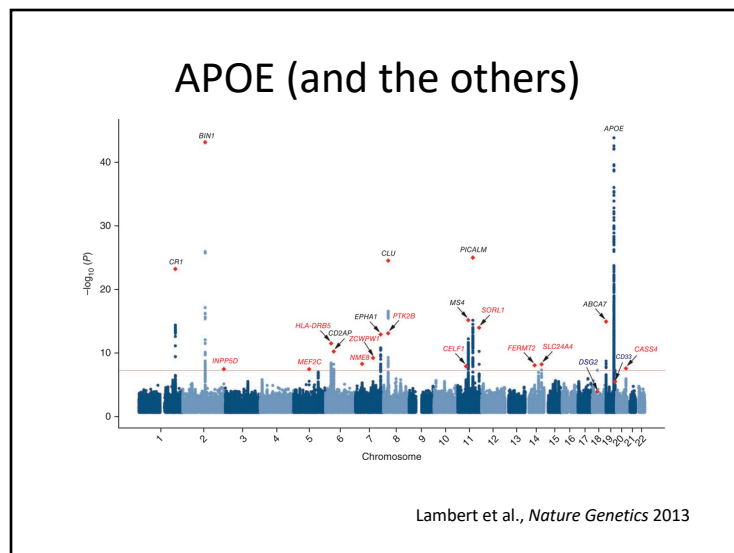


NIH/NIJ



A Word (or Two) on Mouseheimer's Disease

- Gamma-secretase clips many proteins besides APP (Notch, N-Cadherin, p75, etc)
- PS1 mutation carriers differ significantly from sporadic AD (white matter disease, spinal cord, etc)
- Typical mouse models are double- or triple-transgenic (PS1 + APP + MAPT)
- Despite this, progressive, age-related neuronal loss is not a typical feature



Apolipoprotein E

- Three common variants: 2,3,4
- 4 confers risk (65% of AD), 2 protective
- Moves age of onset earlier
- Not useful as a general screening tool
- E4 effect weaker in some groups
- Increases diagnostic accuracy in young patients with unusual clinical picture

Mayeux et al., *NEJM*, 1998

APOE4 Domain Interaction

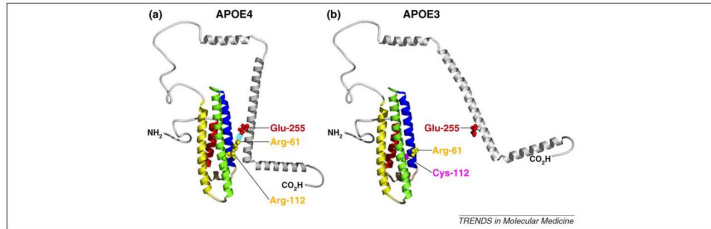
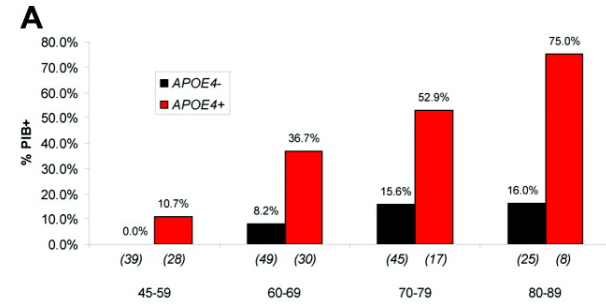


Figure 1. Domain interaction influences the conformation of APOE. (a) In APOE4, Arg-112 orients the side chain of Arg-61 into the aqueous environment where it can interact with Glu-255, resulting in a salt bridge between the N- and C-terminal domains. (b) In APOE3, Arg-61 does not interact with residues in the C-terminal domain, resulting in a very different overall conformation. For details, see reference [28].

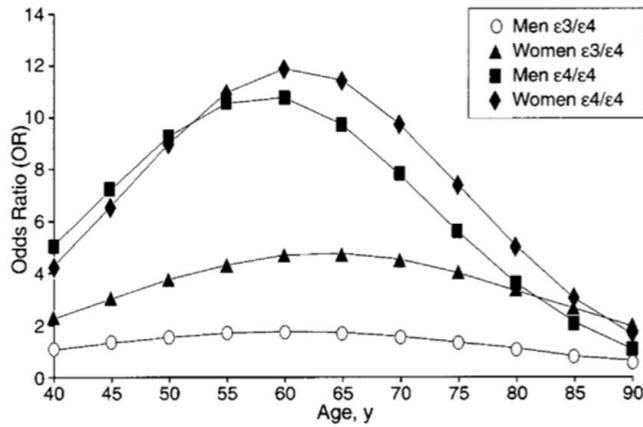
Huang et al., *Trends Mol Med*, 2010

Increased Amyloid Deposition with E4



Morris et al., *Ann Neurol*, 2010

Sex Modifies the APOE4 Effect (case-control data)

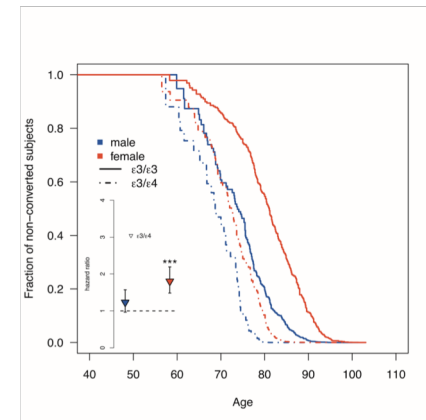


Farrer et al., *JAMA*, 1997

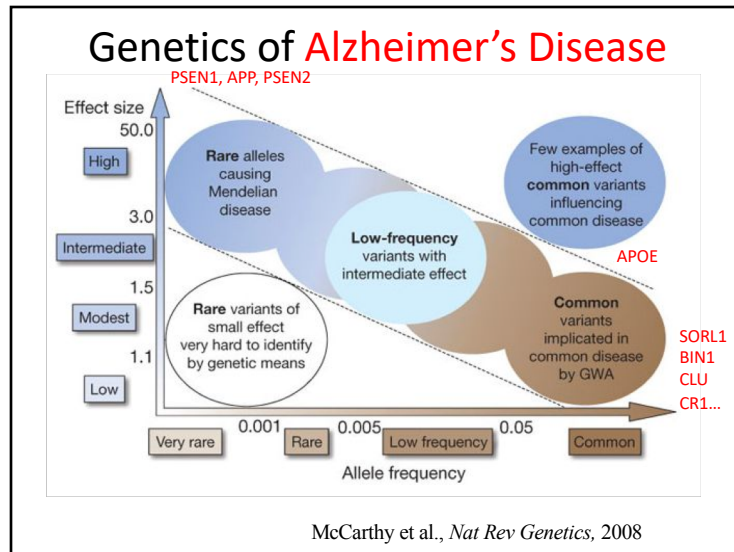
Sex Modifies the APOE4 Effect (longitudinal conversion data)

Clinical conversion from healthy aging to MCI or AD

4500+ older controls
-1320 E3/E4
-3210 E3/E3



Altmann et al., *Ann Neurol*, 2014



Stanford Extreme Phenotypes in Alzheimer's Disease (StEP AD) Cohort

- ADRC-supported study to find rare genetic variants that either
 - protect APOE4 carriers from getting AD
 - cause early-onset AD in non-APOE4 carriers
- Whole-genome sequencing in
 - Healthy controls with 1 or 2 APOE4 copies over age 70
 - AD patients with onset before age 65 and negative for APOE4, PS1/PS2/APP

Conclusions

- Rare autosomal dominant mutations provide human and animal model insights into sporadic AD
- APOE has most clinical relevance
- Other GWAS hits less clinically relevant but important for molecular pathways
- Missing heritability
 - Extreme phenotypes/WGS
 - X-chromosome is unexplored
 - Gene-gene interactions

Acknowledgments

Stanford FIND Lab greicius@stanford.edu

Andre Altmann (alum)	Valerio Napolioni
Yongha Kim	Raiyan Khan
Lily Kim	Will Shirer
Leigh Christopher	Sarah Schlegel
Grace Tam	Michael Belloy

Stanford

Aaron Gitler	Summer Han
Julien Couthouis	Lu Tian
Ruth O'Hara	Victor Henderson
Gayle Deutsch	Joachim Hallmayer
Kathleen Poston	Ed Plowey

UCSF

Bruce Miller
Joel Kramer
Mike Weiner/ADNI

Funding

NIH: P50 AG047366 (ADRC); RO1 AG060747; The **Show Me Charity** Foundation; The J. W. **Bagley** Foundation