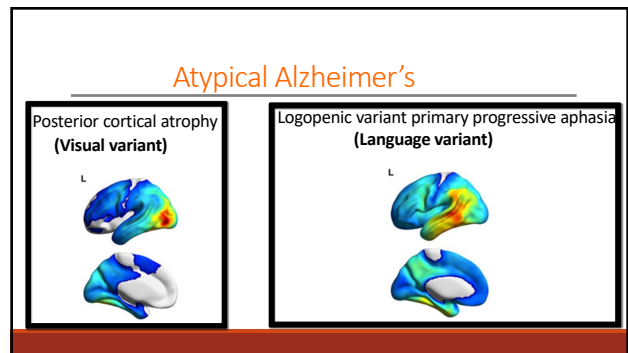
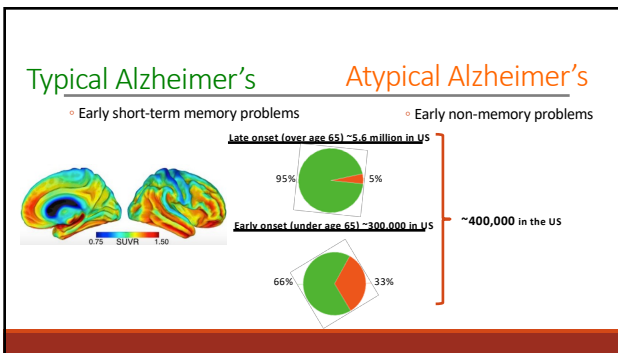
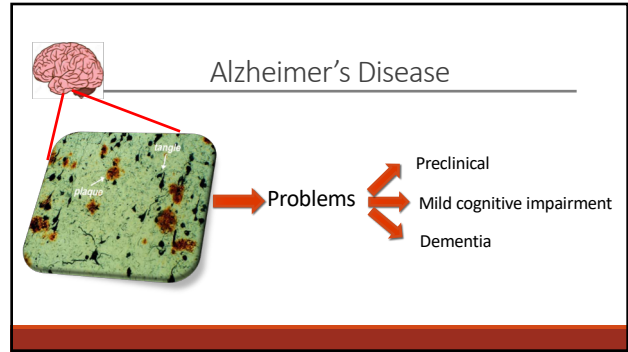
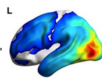


# The Different Faces of Alzheimer's Disease

JACOB HALL, MD



## Posterior Cortical Atrophy (Visual variant)

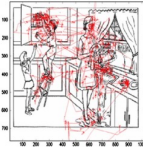


**Symptoms:**

- Seeing/ finding things
- Depth perception
- Driving, reading
- Color distortions, glare sensitivity

**Exam Findings:**

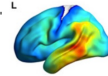
- Seeing the "whole"
- Eye movements
- Reaching objects
- Copying figures



**Average time until diagnosis: 4 years**

Misattributed to anxiety, stress, eye problems → cataract surgery

## Logopenic variant primary progressive aphasia (Language variant)



**Logopenic:** "Lack of words"

**Primary progressive aphasia:** Early language problems

**Symptoms:**

- Word-finding difficulty
- Slower speech
- Mispronouncing or using the wrong words

**Exam findings:**

- Difficulty naming
- Difficulty repeating
- Sound errors

## Summary

1. ~400,000 people in the US with atypical Alzheimer's disease
  - More common in early onset (<65 years old)
2. The best described atypical forms are:
  - A. Posterior cortical atrophy (**visual variant**): seeing the 'forest through the trees', finding things in front of them, depth perception, visual distortions
  - B. Logopenic variant PPA (**language variant**): finding words, repeating and sound errors
3. Atypical forms are underdiagnosed and understudied