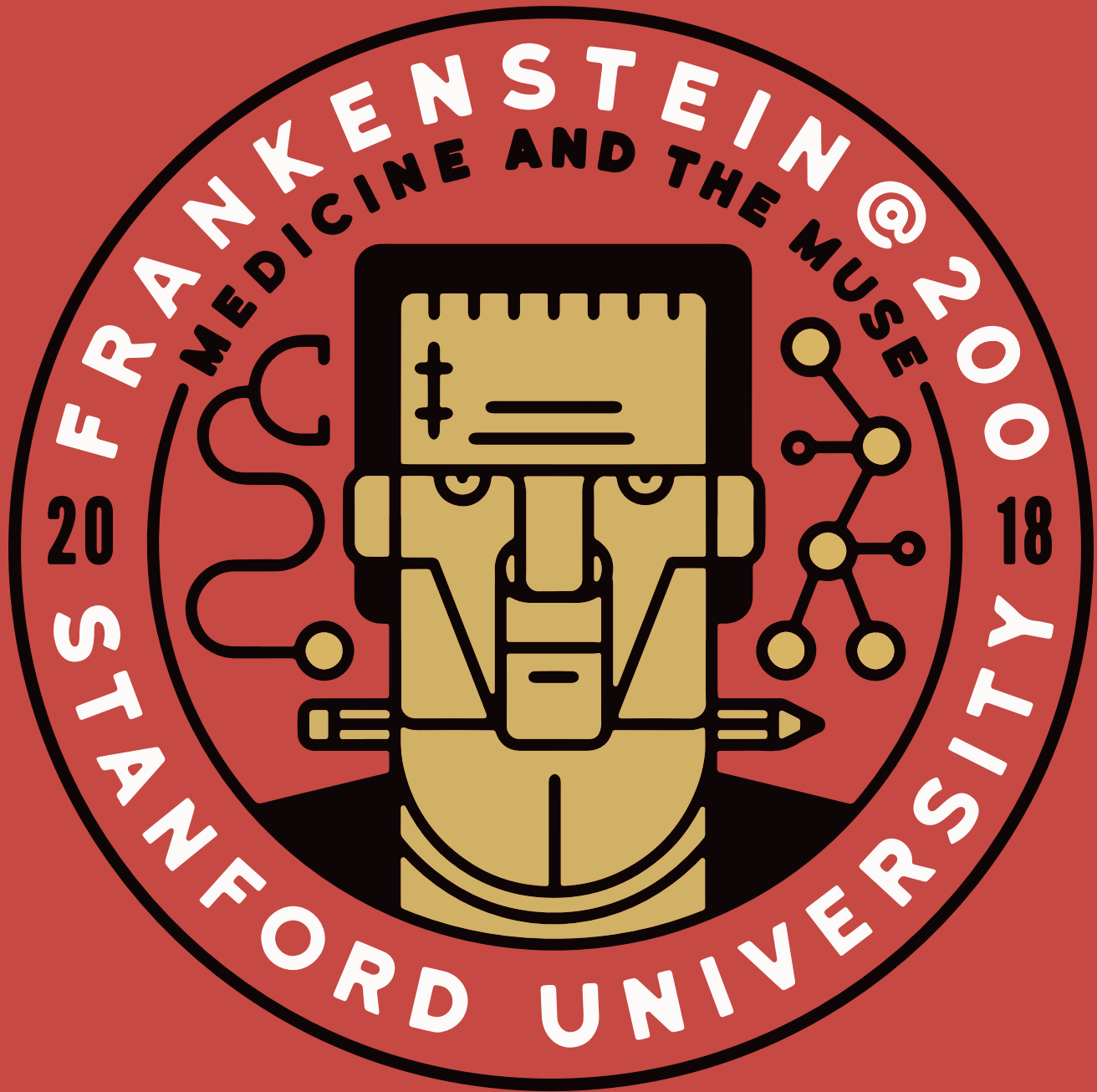


# International Health Humanities Consortium Conference



April 20th - 22nd, 2018  
Stanford University School of Medicine  
Li Ka Shing Center for Learning and Knowledge



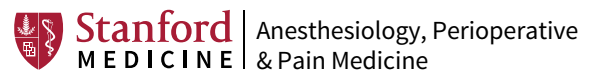
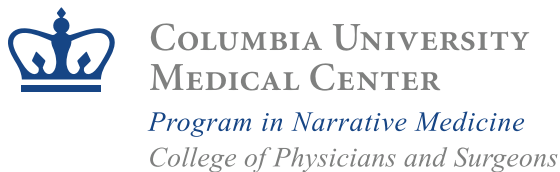
**Stanford** | Medicine & the Muse  
MEDICINE | Center for Biomedical Ethics

# Partner and Sponsors

## Partner

Elyce Melmon, in honor of Ken Melmon

## Sponsors



The Marmor Foundation / Drs. Michael and Jane Marmor

Medicine and the Muse is deeply grateful for the generosity of our partner and sponsors.

# Contents

|  |    |
|--|----|
| Partner and Sponsors                                   | 2  |
| Meeting at a glance                                    | 4  |
| Map  | 6  |
| Shuttle schedule                                       | 7  |
| Conference committee<br>& Health humanities leadership | 9  |
| Plenary speakers                                       | 10 |
| Plenary panel  | 12 |
| Breakout sessions/leaders                              | 13 |
| Performers   | 20 |
| Plenary moderators and hosts                           | 21 |
| Evening film events/leaders                            | 22 |
| Concurrent sessions schedules                          |    |
| Saturday   | 23 |
| Sunday   | 25 |

# Meeting at a glance

## Friday, April 20

|                   |   |   |
|-------------------|---|---|
| 7:30am - 8:30am   | ● | <b>Registration &amp; breakfast</b><br>Li Ka Shing Center (LKSC) 2nd Floor Lobby                  |
| 8:30am - 8:45am   | ● | <b>Welcome, Audrey Shafer</b><br>LKSC Berg Hall   |
|                   | ● | <b>Plenary moderator, Jacqueline Genovese</b><br>LKSC Berg Hall                                   |
| 8:45am - 9:45am   | ● | <b>Plenary, Alexander Nemerov</b><br>LKSC Berg Hall   |
| 9:45am - 10:15am  | ● | <b>Break</b>  |
| 10:15am - 11:45am | ● | <b>Plenary panel, Holly Tabor (moderator)</b><br>LKSC Berg Hall                                   |
| 12:00pm - 1:00pm  | ● | <b>Lunch</b><br>LKSC 2nd Floor Lobby  |
| 12:30pm - 1:00pm  | ● | <b>Special performance: Frankenstein: A reading, Anthony Heald</b><br>LKSC Berg Hall              |
| 1:15pm - 2:15pm   | ● | <b>First breakout session</b>   |
| 2:30pm - 3:30pm   | ● | <b>Second breakout session</b>  |
| 3:30pm - 3:45pm   | ● | <b>Break</b>  |
| 3:45pm - 4:00pm   | ● | <b>Welcome back, Audrey Shafer</b><br>LKSC Berg Hall  |
|                   | ● | <b>Plenary moderator, David Elkin</b><br>LKSC Berg Hall   |
| 4:00pm - 5:00pm   | ● | <b>Plenary, Lester D. Friedman</b><br>LKSC Berg Hall  |
| 5:00pm - 6:00pm   | ● | <b>Reception</b><br>LKSC 2nd Floor Lobby  |
| 8:00pm            | ● | <b>Film: Bride of Frankenstein</b><br>The Stanford Theatre, Palo Alto (schedule available online) |

## Breakout sessions

- **1:15pm - 2:15pm breakout session**
- **The spark of life in modern medicine: Who's the monster?, David Gaba**  
Room LK062, Simulation Center, Capacity: 15
- **Hippocrates Cafe: Frankenstein@200, Jon Hallberg**  
LKSC Berg Hall
- **Writing & Storytelling Workshop, Laurel Braitman**  
Room LK205/206, Capacity: 15
- **Creature Lab: How to sculpt a face, Eliza Reisfeld**  
Room LK208, Capacity: 15; 1:15pm - 3:30pm
- **Anderson Art Tour, Betty Noguchi**  
Anderson Collection, Capacity: 10
- **2:30pm - 3:30pm breakout session**
- **The spark of life in modern medicine: Who's the monster?, David Gaba**  
Room LK062, Simulation Center, Capacity: 15
- **Hippocrates Cafe: Frankenstein@200, Jon Hallberg**  
LKSC Berg Hall
- **Imagine that: A workshop exploring creating writing in the health humanities, Lise Saffran and Lois Leveen**  
Room LK203/204, Capacity: 20
- **Frankenstein on film: A screening of video essays, Shane Denson**  
McMurtry Building, Room 115, Capacity: 40
- **Anderson Art Tour, Betty Noguchi**  
Anderson Collection, Capacity: 10
- **Cantor Arts Tour**  
Cantor Arts Center, Capacity: 20

# Meeting at a glance

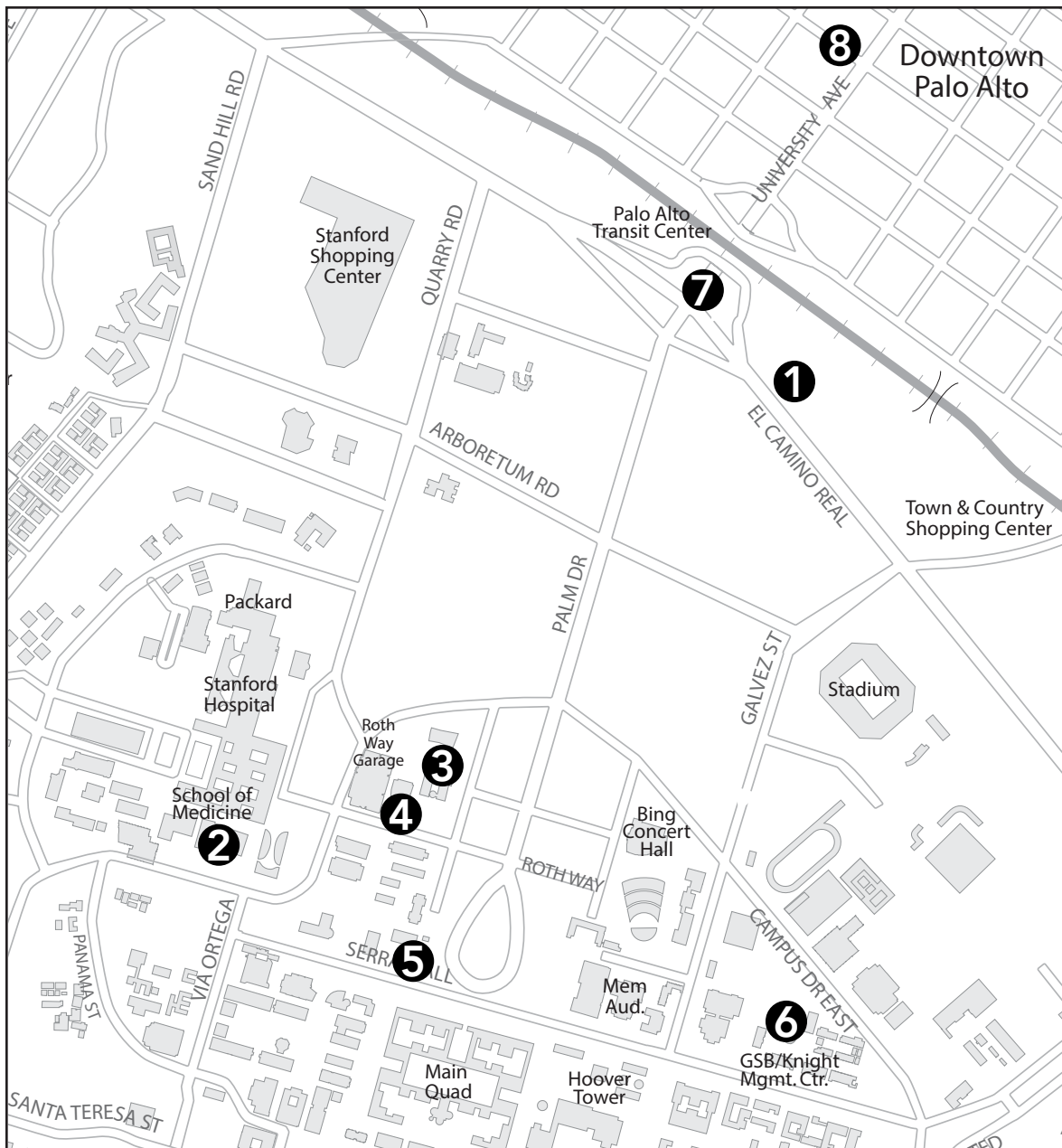
## Saturday, April 21

|                   |   |   |
|-------------------|---|---|
| 7:30am - 8:30am   | ● | <b>Registration &amp; breakfast</b><br>LKSC 2nd Floor Lobby                                       |
| 8:30am - 8:45am   | ● | <b>Welcome, Audrey Shafer</b><br>LKSC Berg Hall   |
|                   | ● | <b>Plenary moderator, Laurel Braitman</b><br>LKSC Berg Hall                                       |
| 8:45am - 9:45am   | ● | <b>Plenary, Alvan Ikoku</b><br>LKSC Berg Hall   |
| 9:45am - 10:00am  | ● | <b>Break</b>  |
| 10:00am - 11:00am | ● | <b>Concurrent sessions</b>  |
| 11:00am - 11:15am | ● | <b>Break</b>  |
| 11:15am - 12:15pm | ● | <b>Concurrent sessions</b>  |
| 12:30pm - 1:30pm  | ● | <b>Lunch</b><br>LKSC 2nd Floor Lobby  |
| 1:00pm - 1:30pm   | ● | <b>Special performance: Aleta Hayes &amp; The Chocolate Heads Movement Band</b><br>LKSC Berg Hall |
| 1:30pm - 1:45pm   | ● | <b>Break</b>  |
| 1:45pm - 2:45pm   | ● | <b>Concurrent sessions</b>  |
| 2:45pm - 3:00pm   | ● | <b>Break</b>  |
| 3:00pm - 4:00pm   | ● | <b>Concurrent sessions</b>  |
| 4:00pm - 4:15pm   | ● | <b>Break</b>  |
| 4:15pm - 5:15pm   | ● | <b>HHC Business Meeting, Therese Jones, Craig Klugman</b><br>LKSC Berg Hall                       |
| 8:00pm            | ● | <b>Film: National Theatre Frankenstein, Maren Monsen, Diana Farid</b><br>Herrin Hall T175         |

## Sunday, April 22

|                   |   |   |
|-------------------|---|---|
| 7:30am - 8:30am   | ● | <b>Registration &amp; breakfast</b><br>LKSC 2nd Floor Lobby |
| 8:30am - 8:45am   | ● | <b>Welcome, Audrey Shafer</b><br>LKSC Berg Hall             |
|                   | ● | <b>Plenary moderator, Lois Leveen</b><br>LKSC Berg Hall     |
| 8:45am - 9:45am   | ● | <b>Plenary, Catherine Belling</b><br>LKSC Berg Hall         |
| 9:45am - 10:00am  | ● | <b>Break</b>  |
| 10:00am - 11:00am | ● | <b>Concurrent sessions</b>                                  |
| 11:00am - 11:15am | ● | <b>Break</b>  |
| 11:15am - 12:15pm | ● | <b>Concurrent sessions</b>                                  |
| 12:15pm - 12:30pm | ● | <b>Break</b>  |
| 12:30pm - end     | ● | <b>Lunch (boxes available)</b><br>LKSC 2nd Floor Lobby      |
| 12:30pm - 1:30pm  | ● | <b>Concurrent sessions</b>                                  |
| 1:30pm - 2:30pm   | ● | <b>Closing Circle, Laurel Braitman</b><br>LKSC Berg Hall    |

# Map



**1** Sheraton/Westin Hotels

**2** LKSC, where conference is located

**3** Cantor Arts Center and Anderson Collection

**4** McMurtry Building

**5** Herrin Hall

**6** CEMEX Auditorium (located in the Business school)

**7** Palo Alto Caltrain/Transit Center

**8** Stanford Theatre

# Shuttle schedule

## Chartered shuttle

We will be providing a chartered shuttle that makes round trips between the Sheraton Palo Alto Hotel and LKSC, where the conference will be taking place. Additionally, Saturday night, we will be providing a shuttle making round trips between the hotel and Herrin Hall, where the evening film will be shown.

Please note that there is no shuttle servicing the Westin Hotel, as the Westin Hotel is within walking distance to the Sheraton Hotel.

The shuttle makes trips at the following times:

| Friday<br>April 20 | Sheraton<br>Hotel | LKSC   |
|--------------------|-------------------|--------|
| AM                 | 6:30am            | 6:45am |
|                    | 7:00am            | 7:15am |
|                    | 7:30am            | 7:45am |
|                    | 8:00am            | 8:15am |
|                    | 8:30am            | 8:45am |
|                    | 9:00am            | 9:15am |
|                    | 9:30am            | 9:45am |
| PM                 | -                 | 3:45pm |
|                    | 4:00pm            | 4:15pm |
|                    | 4:30pm            | 4:45pm |
|                    | 5:00pm            | 5:15pm |
|                    | 5:30pm            | 5:45pm |
|                    | 6:00pm            | 6:15pm |
|                    | 6:30pm            | -      |

| Saturday<br>April 21 | Sheraton<br>Hotel | LKSC   |
|----------------------|-------------------|--------|
| AM                   | 6:30am            | 6:45am |
|                      | 7:00am            | 7:15am |
|                      | 7:30am            | 7:45am |
|                      | 8:00am            | 8:15am |
|                      | 8:30am            | 8:45am |
|                      | 9:00am            | 9:15am |
|                      | 9:30am            | 9:45am |
| PM                   | -                 | 3:30pm |
|                      | 3:45pm            | 4:00pm |
|                      | 4:15pm            | 4:30pm |
|                      | 4:45pm            | 5:00pm |
|                      | 5:15pm            | 5:30pm |
|                      | 5:45pm            | 6:00pm |
|                      | 6:15pm            | -      |

| Sunday<br>April 22 | Sheraton<br>Hotel | LKSC    |
|--------------------|-------------------|---------|
| AM                 | 6:30am            | 6:45am  |
|                    | 7:00am            | 7:15am  |
|                    | 7:30am            | 7:45am  |
|                    | 8:00am            | 8:15am  |
|                    | 8:30am            | 8:45am  |
|                    | 9:00am            | 9:15am  |
|                    | 9:30am            | 9:45am  |
| PM                 | -                 | 12:00pm |
|                    | 12:15pm           | 12:30pm |
|                    | 12:45pm           | 1:00pm  |
|                    | 1:15pm            | 1:30pm  |
|                    | 1:45pm            | 2:00pm  |
|                    | 2:15pm            | 2:30pm  |
|                    | 2:45pm            | 3:00pm  |
| 3:15pm             | -                 |         |

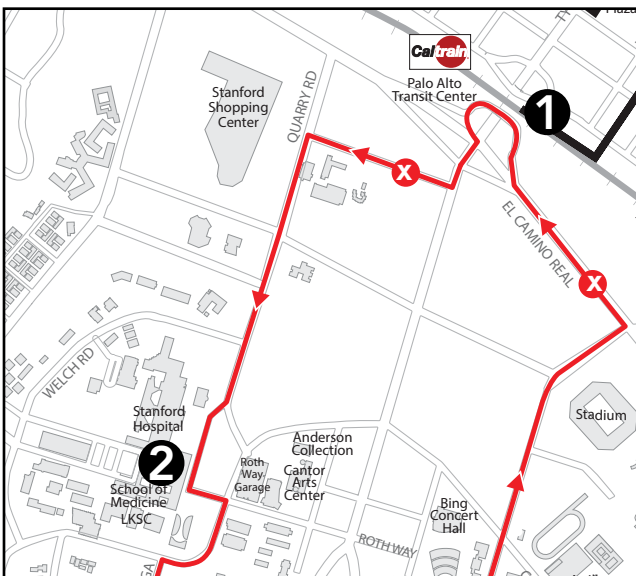
| Saturday<br>April 21 | Sheraton<br>Hotel | Herrin<br>Hall |
|----------------------|-------------------|----------------|
| PM                   | 7:00pm            | 7:15pm         |
|                      | 7:30pm            | 7:45pm         |
|                      | 8:00pm            | 8:15pm         |
|                      | 8:30pm            | 8:45pm         |
|                      | 9:00pm            | 9:15pm         |
|                      | 9:30pm            | 9:45pm         |
|                      | 10:00pm           | 10:15pm        |
|                      | 10:30pm           | 10:45pm        |
| 11:00pm              | -                 |                |

# Shuttle schedule

## Marguerite shuttle

Stanford also provides free Marguerite shuttles, stopping at multiple places on campus. Specifically, on Friday, you can take the X shuttle from the Sheraton and Westin hotels to the conference, and the Y shuttle from the conference to the Sheraton and Westin hotels.

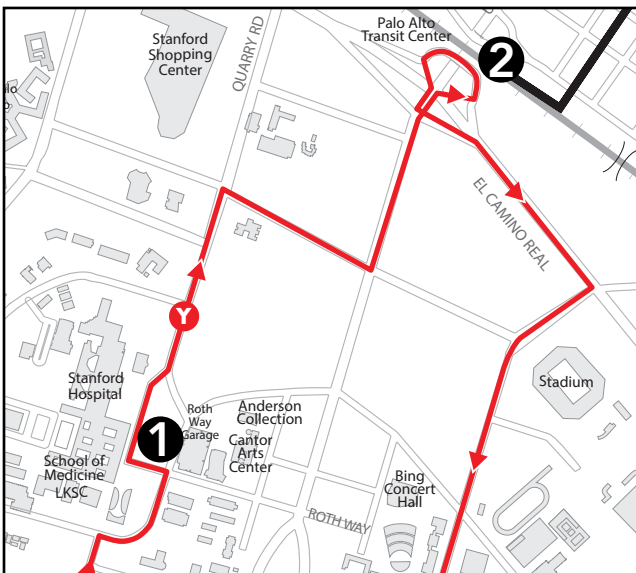
**Note: these shuttles do not run on the weekend**



## X Shuttle

From Sheraton (near Westin) to Conference  
Friday, 5:50am - 8:30pm, every 20 minutes

- 1 Palo Alto Caltrain/Transit Center: directly behind the Sheraton Hotel
- 2 Stanford School of Medicine: closest stop to LKSC, where conference is located; within walking distance



## Y Shuttle

From Conference to Sheraton (near Westin)  
Friday, 6:30am - 9:00pm, every 20 minutes

- 1 Stanford School of Medicine: closest stop to LKSC, where conference is located; within walking distance
- 2 Palo Alto Caltrain/Transit Center: directly behind the Sheraton Hotel



# Health Humanities Consortium

## Conference Committee

**Chair:** Audrey Shafer

**Coordinator:** Monique Chao Norquist

**Abstracts chair:** Laurel Braitman

**Logistics:** Joshua Stanley

**Webmaster:** Natasha Gupta

**Film events:** Maren Monsen, Diana Farid

**Frankenstein@200 logo:** Ryan Brewster

**Vice-chair:** Jacqueline Genovese

**Finance director:** Stephany Prince

**Planning member:** David Elkin, UCSF

**Social media:** Julia Pandolfo

**Initial web content:** Tacy Framhein

**Print materials:** John Nguyen

**Program/badge design:** Rebecca Shafer

**Conference team members:** Archana Bharadwaj, Jacob Blythe, Jen Ann Ehrlich, Kelly Cox Gonzalez, Harika Kottakota, Nick Love, Amrapali Maitra, Leslie Reinfeld, Gabby Rivera, Anne Summers, Robert Townsend, Patti Ungaro, Arany Uthayakumar

## Health Humanities Consortium Steering Committee

### **Co-Chairs**

Therese Jones, University of Colorado Anschutz Medical Campus

Craig Klugman, DePaul University

### **Treasurer**

Michael Blackie, University of Illinois at Chicago

### **Members**

Sarah Berry, Bellarmine University

Stephanie Brown Clark, University of Rochester Medical Center

Katherine Burke, Lerner College of Medicine, Cleveland Clinic

Nate Carlin, University of Texas Houston

Quentin Eichbaum, Vanderbilt University Medical Center

Les Friedman, Hobart & William Smith Colleges

Rebecca Garden, SUNY Upstate Medical University

Erin Lamb, Hiram College

Brad Lewis, New York University

Lise Saffran, University of Missouri

Audrey Shafer, Stanford University School of Medicine/VAPAHCS

Danielle Spencer, Albert Einstein College of Medicine/Columbia University

Gail Werblood, University of Illinois at Chicago

# Plenary speakers

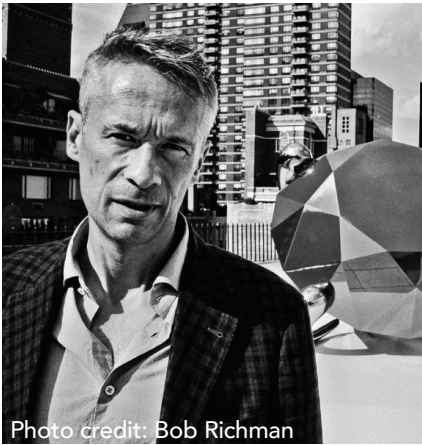


Photo credit: Bob Richman

## Alexander Nemerov

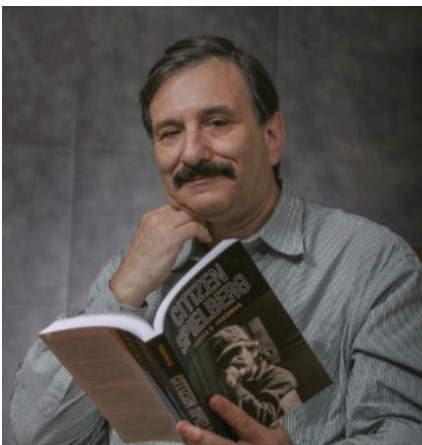
*Carl & Marilyn Thoma Provostial Professor in the Arts & Humanities  
Department of Art & Art History  
Stanford University*

### **The Ghost of Jane McCrea**

Friday, April 20, 8:45am

---

Alexander Nemerov writes about the presence of art, the recollection of the past, and the importance of the humanities in our lives today. A noted writer and speaker on the arts, he recently delivered the 66th annual Andrew W. Mellon Lectures in the Fine Arts at the National Gallery in Washington, D.C. His most recent books are *Summoning Pearl Harbor* (2017), *Soulmaker: The Times of Lewis Hine* (2016), *Silent Dialogues: Diane Arbus and Howard Nemerov* (2015), and *Wartime Kiss: Visions of the Moment in the 1940s* (2013).



## Lester D. Friedman

*Emeritus Professor and Former Chair  
Media and Society Program  
Hobart and William Smith Colleges*

### **Creature Features: The Universal and Hammer Frankenstein Films**

Friday, April 20, 4:00pm

---

Professor Friedman also taught cinema studies at Syracuse, Northwestern, American Universities, the Art Institute of Chicago, and the Spertus Institute. He taught health humanities and bioethics at Upstate Medical Center (Syracuse) and the Feinberg School of Medicine at Northwestern University. His areas of expertise include: film genres, American cinema of the 1970s, American Jewish cinema, British film of the 1980s, Health and Humanities, and Multiculturalism in Film. The author, co-author, and editor of over 20 books and numerous articles, he has written books about Steven Spielberg, Arthur Penn, Peter Pan, Frankenstein, and Clint Eastwood. His two screenplays, *Prisoners of Freedom* (2002) and *Thomas Scasz and the Myth of Mental Illness* (1989) have been the basis of independent films directed by the award-winning visual artist Owen Shapiro.

# Plenary speakers



## Alvan Ikoku

*Assistant Professor of Comparative Literature and Medicine  
Stanford University*

### **Ethics, Dialogue, and Frankenstein**

Saturday, April 21, 8:45am

---

Alvan Ikoku is affiliated with Stanford's centers for African studies, comparative studies in race and ethnicity, biomedical ethics and global health. His research explores the intersection of literature and medicine, specializing in the study of African and African diasporic literatures, twentieth-century fiction, narrative ethics, and histories of tropical medicine and global health. He has written for the World Health Organization, *Small Axe*, *Narrative Inquiry in Bioethics*, and *Virtual Mentor*. He has received president's teaching awards at Columbia and Harvard Universities. His research has been funded by the Mellon Foundation, the American Council of Learned Societies, Columbia's Institute for Social and Economic Research and Policy, the Marjorie Hope Nicolson Fellowship, and the Rhodes Trust.



## Catherine Belling

*Associate Professor of Medical Education  
Center for Bioethics and Medical Humanities  
Northwestern University Feinberg School of Medicine*

### **Playing with Fire: Sick Prometheus and the Risk of Science**

Sunday, April 22, 8:45am

---

Catherine Belling's first book, *A Condition of Doubt: The Meanings of Hypochondria* (Oxford, 2012), won the 2013 Kendrick Book Prize (US Society for Literature, Science, and the Arts). She is editor of the journal *Literature and Medicine* (Johns Hopkins U Press). She has also taught at Stony Brook University Health Sciences Center School of Medicine. Her research and teaching focus on hypochondriasis, cultural narratives regarding health/disease and their role in fostering anxiety about disease and health care, the role of narrative in patients', physicians', and biomedical scientists' thinking about the inside of the living human body, and the place of fear and uncertainty in medical epistemology.

# Plenary panel

## Frankenstein's Creature through a Disability Lens: Multidisciplinary Perspectives on Inclusion, Exclusion and Otherness

Friday, April 20, 10:15am



### Holly Tabor

*Associate Professor of Medicine  
Associate Director for Clinical Ethics and Education  
Stanford University School of Medicine*

---

Holly Tabor, PhD, is currently Associate Professor in the Department of Medicine at the Stanford University School of Medicine and the Associate Director of the Stanford Center for Biomedical Ethics. She conducts research on ethical issues in genetic research, specifically issues in new genomic technologies in research and clinical care. She is also conducting studies characterizing the perspectives of parents and adolescents across different contexts of pediatric genetic research about ethical and social issues.



### Rabia Belt

*Assistant Professor  
Stanford University School of Law*

---

Rabia Belt is a legal historian whose scholarship focuses on disability and citizenship. She received her JD from the University of Michigan Law School in 2009 and her PhD in American Studies from the University of Michigan in 2015. Her scholarship ranges from cultural analysis of disability in media, to contemporary issues facing voters with disability, to the historical treatment of disabled Americans. She is currently writing a book titled *Disabling Democracy in America: Disability, Citizenship, Suffrage, and the Law, 1819-1920*.



### Rebecca Garden

*Associate Professor of Bioethics and Humanities  
Public Health and Preventative Medicine  
SUNY Upstate Medical University, Syracuse, NY*

---

Rebecca Garden earned her PhD from Columbia University's Department of English. She has published on healthcare, narrative, and disability and Deaf studies in journals including *New Literary History*, *Disability Studies Quarterly*, and the *Journal of General Internal Medicine* and is the Executive Director of the Consortium for Culture and Medicine, an inter-institutional collaboration.



### David Platzer

*Ethnographer  
Adobe Systems*

---

David Platzer is a PhD candidate in the Anthropology department at Johns Hopkins, where he is in the final stages of writing his dissertation, "Autism at Work: Labor, Reason, and the Value of Difference," which he plans to defend in September, 2018. This ethnographic research, which took him to sites as disparate as Addis Ababa, Ethiopia, Bangalore, India, and deep into the heart of Silicon Valley, focused on the development of employment programs targeted at autistic adults, over of 80% of whom are unemployed globally. David is also an Experience Researcher with Adobe's Design Research and Strategy group in San Francisco.

# Breakout sessions/leaders

## Writing & Storytelling Workshop

Friday, April 20

1:15pm - 2:15pm

Room LK205/206

Maximum capacity: 15

---

The medical humanities are a storytelling field but so often we miss opportunities to infuse our work with creativity and connection. In this short session, Stanford Medicine and the Muse Writer-in-Residence Laurel Braitman will lead you through exercises to deepen and expand your approach to writing and introduce tips, tricks, and techniques that will help you make your written work more vibrant, alive, provocative and meaningful to your readers—inside the academy and beyond. Please bring something to write with/on.



Photo credit: Bret Hartman

## Laurel Braitman

*Adjunct Professor*

*Anesthesiology, Perioperative & Pain Medicine*

*Writer in Residence*

*Medicine and the Muse, Center for Biomedical Ethics*

*Stanford University School of Medicine*

(She will also lead Closing Circle, Sunday, April 22, 1:30pm)

Laurel Braitman is the *New York Times* bestselling author of *Animal Madness* (Simon & Schuster 2015). Her writing has appeared in *The Guardian*, *The New York Times*, *National Geographic*, *The Wall Street Journal*, *Wired*, and other publications. Her next book is about family, medicine, and how we die (forthcoming, Simon & Schuster). She holds a PhD in history, anthropology, science, technology and society from MIT, is a senior TED fellow and her work and collaborations with physicians, musicians and artists has been featured on the BBC, NPR, Good Morning America, Al Jazeera and elsewhere.

# Breakout sessions/leaders

## The spark of life in modern medicine: Who's the monster?

Friday, April 20

1:15pm - 2:15pm and 2:30pm - 3:30pm

Room LK062

Maximum capacity: 15 in each session

---

Held in the operating room within the simulation center, this session addresses clinical issues of putting real patients into various states of nearly "suspended animation" and then "reanimating them," such as in various aspects of cardiac arrest or the state between living and dying with subsequent "resuscitation" [in French "reanimation"] with CPR and electric shock.

The major thread of the session, triggered by *Frankenstein*, is about the "creation" of "creatures" or "monsters" in partial simulations of human beings, primarily for teaching of healthcare personnel (novices to experts). In healthcare simulation "we" (clinicians and staff) "create" (designers, manufacturers) and/or "use" (instructors; learners/participants) real or virtual artifacts (such as computerized mannequins) that are meant to be imitations of humans to one degree or another. This session will explore some of the issues raised by such creation and use, including:

- the reaction of participants and lay persons to our simulation "mannequins" ("monsters")
- the emotional and philosophical "meaning" we — the users — attach to these creations as we use them to try to improve the quality and safety of healthcare
- choices made by mannequin designers about what "human features" are included in the device
- issues of the Uncanny Valley (where some kinds of partial imitations of humans are considered more or less "uncanny" (i.e. "creepy") by some people
- what it means (to participants and instructors) for the simulator (creature) to "die"



## David M. Gaba

*Associate Dean for Immersive & Simulation-based Learning  
Professor of Anesthesiology, Perioperative & Pain Medicine  
Stanford School of Medicine*

*Staff Anesthesiologist  
Founder & Co-Director  
Patient Simulation Center at VA Palo Alto Health Care System*

---

David Gaba's laboratory has worked extensively on human performance and patient safety issues. His laboratory is a pioneer in applying organizational safety theory to health care. The laboratory is also the inventor of the modern full-body patient simulator and is responsible for adapting Crew Resource Management training from aviation to healthcare, first for anesthesia and then for many other healthcare domains. He is a key pioneer in the development of cognitive aids and Emergency Manuals in healthcare. The lead author of *Crisis Management in Anesthesiology* (now in its 2nd edition), he was the founding Editor-in-Chief of the journal *Simulation in Healthcare* – for which he served as the EIC for 12 years.

# Breakout sessions/leaders

## Creature Lab: How to sculpt a face

Friday, April 20

1:15pm - 3:30pm (one group only)

Room LK208

Maximum capacity: 15

---

Ever seen an unforgettable face? Come sculpt it with us! In this workshop, you'll learn the basics of sculpting a face in clay. Whether it's a human you know, or a creature you've dreamt up, you'll learn the fundamental techniques of 3D art and design. Through guided instruction, you'll create your very own clay character portrait to take home. All materials are provided, and no artistic experience is necessary.



## Eliza Reisfeld

*Illustrator*

*Sculptor*

*Designer*

---

Eliza Reisfeld is an illustrator and Art Director at RogueMark Studios. She graduated from RISD with a BFA in illustration, and has studied at the Animation Collaborative. Her passion for animals, nature, and the human connection inspire her work. She captures charming personalities with a variety of mediums, including paint, ink, digital media, and clay.

Take a peek at her work if you're curious, at [elizareisfeldart.com](http://elizareisfeldart.com).

# Breakout sessions/leaders

## Hippocrates Cafe

Friday, April 20

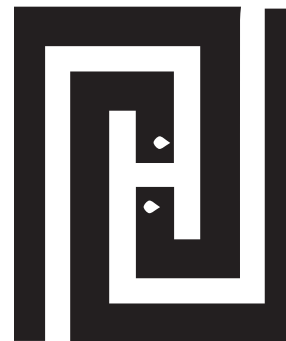
1:15pm - 2:15pm and 2:30pm - 3:30pm

LKSC Berg Hall C

No sign up needed, same performance both times

---

This session will explore “Frankenstein” through spoken word and music, drawing from the novel and source materials, as well as poetry and prose inspired by Mary Shelley’s work. Dr. Jon Hallberg, the creator of Hippocrates Cafe, will serve as the narrator. He’ll be joined by actors Candace Barrett and Raye Birk, and musicians Robert Bell (guitar) and Dan Newton (accordion). Collectively, these Minnesota-based performers have appeared in television and film, on stages throughout the country and across the globe (including Broadway and the West End in London), and on such shows as “A Prairie Home Companion.”



## Jon Hallberg

*Associate Professor*

*Family Medicine and Community Health*

*University of Minnesota*

---

John Hallberg, an award-winning physician and educator, is the medical director of the innovative University of Minnesota Health Mill City Clinic in Minneapolis, which he helped design. Since 2003, Jon has been the regular medical commentator on the regional “All Things Considered” on Minnesota Public Radio, appearing over 500 times. In 2009 Dr. Hallberg created Hippocrates Cafe, a live radio-inspired show that explores healthcare topics using professional actors and musicians. To date, he has created over 100 different shows that have appeared in eight states across the country.



# Breakout sessions/leaders

## Frankenstein on film: A screening of video essays

Friday, April 20

2:30pm - 3:30pm

McMurtry Building, Room 115

Maximum capacity: 40

---

Stanford media scholar Shane Denson has curated a selection of video essays and related videographic works that deal with the rich cinematic history of Frankenstein films. Beginning with Thomas Edison's single-reel Frankenstein from 1910, more than 200 adaptations, spin-offs, and rip-offs of Mary Shelley's Gothic novel have appeared on film, television, or other moving-image media. Many of these, including the Universal Studios productions of the 1930s and 1940s — which gave birth to the iconic image of the monster, as embodied by Boris Karloff — include highly self-reflexive mediations on cinema itself. Cinema, it has been argued, is itself an essentially Frankensteinian technology; it assembles the dead (photographic) traces of living beings, puts them together in a new arrangement or body (via montage), and re-animates them with a spark of life (or light, in the act of projection). The history of Frankenstein films thematizes this act of animation, as well as related media-technological innovations: the addition of sound, color, 3D, or computer-generated imagery. The screening session takes up these and other issues through a series of video essays looking at Frankensteinian films from Edison's early cinematic Frankenstein to the computational or post-cinematic images of *Ex Machina* (2014).



## Shane Denson

Assistant Professor  
Film & Media Studies Program  
Department of Art & Art History  
Stanford University

---

Shane Denson's research and teaching interests span a variety of media and historical periods, including phenomenological and media-philosophical approaches to film, digital media, comics, games, videographic criticism, and serialized popular forms. He is the author of *Postnaturalism: Frankenstein, Film, and the Anthropotechnical Interface* (Transcript-Verlag/Columbia University Press, 2014) and co-editor of several collections: *Transnational Perspectives on Graphic Narratives* (Bloomsbury, 2013), *Digital Seriality* (special issue of *Eludamos: Journal for Computer Game Culture*, 2014), and the open-access book *Post-Cinema: Theorizing 21st-Century Film* (REFRAME Books, 2016). See [shanedenson.com](http://shanedenson.com) for more information.

# Breakout sessions/leaders

## Imagine that: A workshop exploring creating writing in the health humanities

Friday, April 20

2:30pm - 3:30pm

Room LK203/204

Maximum capacity: 20

---

How can imagination animate your teaching and scholarship? Which health humanities goals can be best achieved through imaginative activities? In this workshop, participants will explore how easy-to-incorporate creative writing exercises can bring important themes to life for scholars and students of health humanities. Health humanities teaching and research often focuses on close readings of literary fiction and poetry as a means to increase empathy, curiosity, and tolerance for ambiguity. This workshop reveals how these effects can be deepened when we imagine someone else's experience through creative writing exercises. Drawing on their dual experience as novelists and health humanities scholars, Lise Saffran and Lois Leveen will demonstrate how simple creative writing prompts can deepen our (and our students') ability to connect and communicate with people regarding illness, medical care and public health.

Participants will leave this workshop with a hands-on understanding of the value of creative writing within health humanities; with practical strategies for embedding this approach within courses, clerkships, or in Balint groups, Schwartz Rounds, and similar professional settings; and with deeper confidence in their own abilities as creative writers. No previous experience in creative writing is required.



### Lise Saffran

Director  
Master of Public Health Program  
University of Missouri

---

Lise Saffran, MPH, MFA, teaches Storytelling in Public Health. A graduate of the Iowa Writers' Workshop in fiction and the UNC Gillings School of Global Public Health, her writing on health humanities has appeared in *Academic Medicine*, the *Journal of Medical Humanities*, *Medical Humanities*, the *Journal of Applied Arts in Health*, *Scientific American* and elsewhere. She is the author of the novel *Juno's Daughters* (Penguin/Plume 2011) and numerous short stories.



### Lois Leveen

HumanitiesForHealth.org

---

Lois Leveen, PhD, works in health humanities with a focus on fostering greater reflection for individuals and deeper bonds of community among practitioners, patients, and families. She is the author of the novels *Juliet's Nurse* (Simon & Schuster 2014) and *The Secrets of Mary Bowser*; her poetry has appeared in numerous literary journals and been engraved on a hospital wall. She has also been published in *Ars Medica*, *Permanente Journal*, *The New York Times*, *The Atlantic*, the *Chicago Tribune*, the *Wall Street Journal*, the *Los Angeles Review of Books*, the *Huffington Post*, NPR and C-SPAN.

# Breakout sessions/leaders

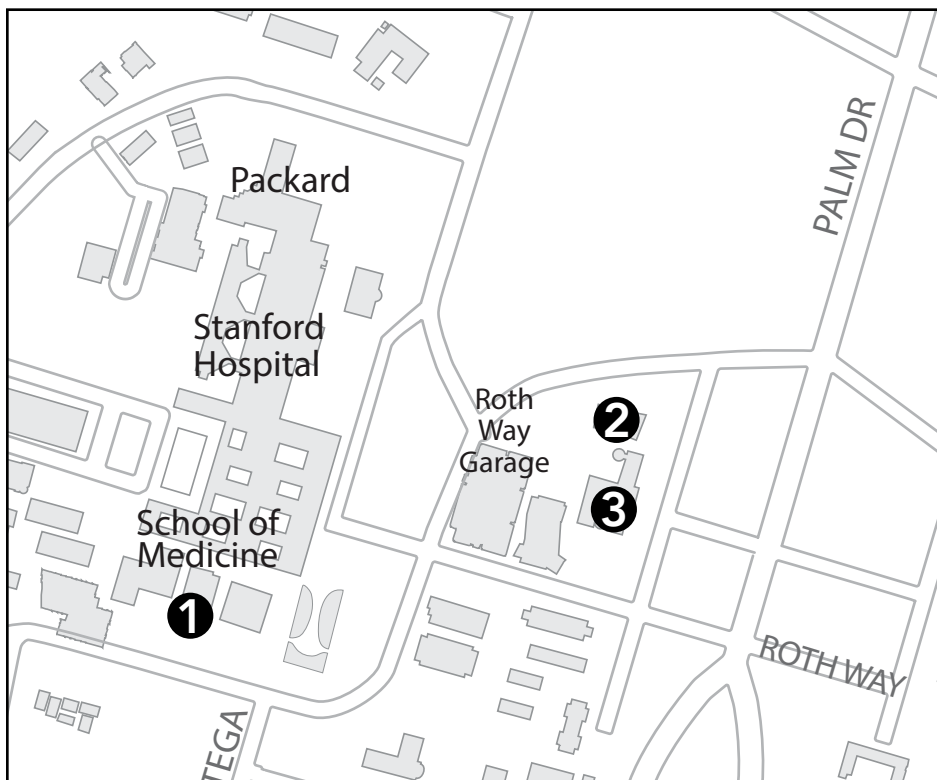
## Visiting Stanford's art museums

Friday, April 20

Anderson Collection: 1:15pm - 2:15pm and 2:30pm - 3:30pm; Capacity: 10 per session

Cantor Arts Center: 2:30pm - 3:30pm; Capacity: 20

Also available to visit on your own time, no sign up needed



- ❶ LKSC, where conference is located
- ❷ Anderson Collection
- ❸ Cantor Arts Center



### ❷ Anderson Collection

314 Lomita Drive

Modern and Contemporary American Art



### ❸ Cantor Arts Center

328 Lomita Drive at Museum Way

**Betray the Secret: Humanity in the Age of Frankenstein** – Ruth Levison Halperin Gallery (2nd floor)

# Performers



## Anthony Heald

Actor

### Frankenstein: A Reading

Friday, April 20, 12:30pm, LKSC Berg Hall

Anthony Heald has received two Tony Award nominations, two Obie Awards, and a Theater World Award. He was most recently on Broadway in *The Elephant Man* with Bradley Cooper. A member of the Oregon Shakespeare Festival Acting Company, he has appeared as Shylock in *Merchant of Venice* and Tartuffe in *Tartuffe*. In the San Francisco Bay Area he has played the role of King Lear in the California Shakespeare Theater. Filmography includes *Silence of the Lambs* (Dr. Frederick Chilton) and television series include *Boston Public* (Scott Gruber). His audiobook narration credits include *Star Wars™* books and *Frankenstein*.



## Aleta Hayes

Lecturer

Contemporary Dance and Performance

Department of Theater and Performance Studies

Stanford University

### Chocolate Heads Performance

Saturday, April 21, 1:00pm, LKSC Berg Hall

Aleta Hayes is a dancer, choreographer, performer and educator. Her MFA in Dance and Choreography is from New York University Tisch School of the Arts. Prior to Stanford, Hayes taught at Wesleyan, Swarthmore, Rutgers and Princeton. As a dancer, she has performed in works by Robert Wilson and Jane Comfort, and her choreography has been seen in New York City and London. The winner of multiple fellowships and artist residencies, Hayes founded The Chocolate Heads Movement Band in 2009. Her work has been hailed for its innovation, interdisciplinarity, focus on diversity, and collaborative spirit.

# Plenary moderators and hosts



## Audrey Shafer

*Professor, Anesthesiology, Perioperative & Pain Medicine  
Veterans Affairs Palo Alto Health Care System  
Director, Medicine and the Muse, Center for Biomedical Ethics  
Stanford University School of Medicine*

### Welcome

Friday, April 20 - Sunday, April 22, 8:30am

Audrey Shafer is the founder of the Medicine & the Muse Program, co-director of the Biomedical Ethics and Medical Humanities Scholarly Concentration; and co-founder of Pegasus Physician Writers. She is the author of *The Mailbox*, a children's novel on posttraumatic stress disorder in veterans. Her poetry on anesthesia, health humanities and family life has been published in journals and anthologies.



## Jacqueline Genovese

*Assistant Director  
Medicine and the Muse, Center for Biomedical Ethics  
Stanford University School of Medicine*

### Plenary Moderator

Friday, April 20, 8:40am

Jacqueline Genovese teaches writing and literature for Stanford students who are veterans or military-related, and leads a literature and medicine series at Stanford Hospital for physicians. She coordinates multiple events, workshops and multidisciplinary education initiatives, is a writer for Scopeblog and is a member of the Stanford Physician Wellness Committee. Genovese holds an MFA in Creative Writing and a master's in Medical Humanities.



## David Elkin

*Clinical Professor  
Department of Psychiatry, UCSF*

### Plenary Moderator

Friday, April 20, 3:50pm

David Elkin, MD, MSL (Masters in the Study of Law) is Co-Director, Psychiatry Consultation-Liaison Service and Co-director, Medical Student Education, Zuckerberg/San Francisco General Hospital. He directs the hospital's Physician Wellness Committee, the Schwartz Rounds Committee and is a faculty member of the UCSF Humanities Program. He is a longtime proponent of the humanities in medicine.

# Evening film events/leaders

## Bride of Frankenstein

Friday, April 20, on your own

8:00pm

Stanford Theatre

221 University Ave

Palo Alto, CA 94301

## Frankenstein

Saturday, April 21

8:00pm

Herrin Hall T175

Free and open to the public; shuttle available from/to conference hotel

The award-winning British National Theatre production of Frankenstein (2011) is brought to the screen by National Theatre Live's Encore Series, directed by Academy Award®-winner Danny Boyle, featuring Benedict Cumberbatch and Jonny Lee Miller in alternating roles as Victor Frankenstein and his creation.



## Maren Monsen

*Director, Program in Bioethics and Film,  
Medicine and the Muse, Stanford Center for Biomedical Ethics  
Stanford University School of Medicine*

---

Maren Monsen, MD has produced and directed six nationally and internationally broadcast documentary films including the Emmy-nominated *The Revolutionary Optimists* (which was won the Hilton Sustainability award at the Sundance Film festival in 2013), about kids in Kolkata India making grassroots change to improve global health. She also works as a Clinical Ethics Consultant at Stanford University Hospital and co-directs the Bioethics and Medical Humanities Scholarly Concentration Program in the Medical School.



## Diana Farid

*Clinical Instructor, Department of Medicine  
Staff Physician, Vaden Health Center, Stanford University  
Assistant Director, Program in Bioethics and Film, Medicine and the Muse, Stanford  
Center for Biomedical Ethics  
Stanford University School of Medicine*

---

Diana Farid MD, MPH is a physician, filmmaker and writer, with education and experience in peace promotion, public health and human rights. She has served as a physician consultant to entertainment media to promote adolescent health through television and film. She co-produced her debut feature length documentary film, *American Rhythms*, depicting the impact of drumming on the education and health of a class of 5th grade students. A member of the Pegasus Physician Writers at Stanford, she has published poetry and prose, and is currently writing a children's picture book series.

# Concurrent sessions - Saturday

9:45am - 12:30pm

## Poster Session A, LKSC Lobby

- Balancing individual and society: Advancing cross-cultural responsiveness in healthcare ethics, **Jasia Baig**
- Repertory, healing, and building community: An intergenerational dance program for people with Parkinson's Disease (PD) and for our aging population, **Rachel Balaban, Julie Adams Strandberg**
- Collaboration between undergraduates and faculty to develop classes and exhibit programming in the health humanities, **Nina Stoyan-Rosenzweig, Yasmina Bassi, Mary Freeman, Eric Segal, Arvind Sommi, Olivia Trumble**
- Student perceptions of the ethics and sustainability of United States student-led medical mission trips to third world countries, **Priya Dave, Amira Nafiseh**
- It's more than a feeling: Liturgy and doing the rite thing in medicine, **Nathaniel Brown**
- A return to the "Art of caring": Creating a culture in support of humanities integration in physical therapy education, **Jessica Lieb Cammarata**
- Worthwhile? Interruptions in the Emergency Department: a virtual experience, **Henry Curtis, Cameron Mozayan**
- A monster that grows within: Hormonal contraceptive technologies, cyborgs, and cancer fears in the Peruvian Andes, **Rebecca Irons**
- A case for coexistence: A discourse on the perceived mutual exclusivity of health science and humanities education, **Hartley Jafine, Neha Malhotra**
- Guests and hosts: *The Odyssey* as a teaching tool for the ethics of home visits, **Gregory Schneider**
- Poor unfortunate souls: Disney, poverty and mental illness, **Jenifer Fisher, Nikki York**

10:00am - 11:00am

## Individual presentations, LK205/206

- Learning from creatures: Dignity maintenance and stigma management in Mary Shelley's *Frankenstein*, **Rosemarie Garland-Thomson**
- Born this way: Reading *Frankenstein* with Disability, **Martha Stoddard Holmes**
- Uncanny disability activism: Horror becomes humanity in *The Humans*, **Ann M. Fox**
- Mother monster: Queer monstrosity and drag technology, **Daniel Williford**

## Individual presentations, LK304/305

- Elevating fear among narrative scholars with the horrors of "narrative" assessment in medical education, **Julie Aultman**
- Following *Frankenstein*: The ultimate medical humanities capstone, **Emily Beckman**
- Moral remediation in medical education: Weeding out the Frankensteins among us, **Alina Bennett**
- Pedagogies and strategies to develop cultural competence of health professions students and trainees: a Philippine perspective, **Pacifico Eric Calderon, Rosalina R. Pangilinan**

## Panel discussion, LK120

- Exploring the dualities of beauty/horror and empathy/violence in the human brain, **Quentin Eichbaum, David Bell, Leonard White**

## Workshop, LK203/204

- The fine art of health care, **Hope Torrents**

11:15am - 12:15pm

## Individual presentations, LK205/206

- What's-it's-name?: *Frankenstein's* creature and the politics of naming in post-2003 Iraq, **Annie Webster**
- Loving Monster: Reading intimate violence in India through Mary Shelley's *Frankenstein*, **Amrapali Maitra**
- The question of human value and Nazi experimentation, **Robert Elliott Allinson**
- In the shadow of Nazism: Disability, monstrosity, and the 'functioning' state, **Lilia Popova**

## Flash presentations, LK304/305

- Mandalas as a window into the wellbeing of medical students, **Julie Chen, Jordan Potash, Joyce Tsang**
- Analyzing arts-based pedagogy in clinical empathy development for medical students, **Manisha Mishra**
- Where is the monster? Lessons learned from the malaria vaccine development in sub-Saharan Africa, **Machteld van den Berg**
- *Frankenstein* and his monster as wounded storytellers, **Elizabeth M. Davis**
- Monstrous loneliness: Isolation as illness in *Frankenstein* and contemporary culture, **Carol-Ann Farkas**
- Disruptions in the doctoral journey: The impact of serious and chronic illness on doctoral education and identity, **Amy Cheung**

## Panel discussion, LK120

- The alchemy of health humanities curricula in the U.S.: A roundtable discussion, **Eileen Anderson-Fye, Phillip Barrish, Emily Bechman, Erin Lamb, Juliet McMullin**

## Workshop, LK203/204

- The monster of implicit bias: an interactive workshop for medical students, **Katherine Burke**

# Concurrent sessions - Saturday

1:30pm - 4:15pm

## Poster Session B, LKSC Lobby

- Links among art, mindfulness, immune response, and disease risk, **Melanie S. Adams**
- The stories we tell each other: Exercising the moral imagination through art, **Raven R. Piercey, Molly Bates**
- Thinking with living things: *Frankenstein*, **Heather Brink-Roby**
- Romantic period art as conversations with enlightened science, **Hallie Chavez**
- A contemporary altar for our techno-human age, **Julia L. Hitchcock**
- "It became a thing": The absence of clinical empathy in Mary Shelley's *Frankenstein*, **Calvin Olsen**
- Using oral history to encourage connection between medical students and senior citizens, **Mallory Otto, Nina Stoyan-Rosenzweig, Ryan Thompson**
- Enhancement and imperfect access, **Gabriel Redel-Traub**
- The Cholera Fiend (1850): a Nineteenth-century story of horror, sentimentalism, and disease, **Katherine Rogers-Carpenter**
- Reimagining old age in early years: A narrative analysis of positive aging in children's storybooks, **Jill Yamasaki**

1:45pm - 2:45pm

## Individual presentations, LK205/206

- The science-fictionality of the antibiotic apocalypse, **Lorenzo Servitje**
- Bringing the past to life: Using qualitative research methodology to explore the subjectivity of patients who are no longer with us, **Hilda Reilly**
- 'The monster of my creation': Analyzing fiction for therapeutic purposes using artificial intelligence, **James Carney**
- The ethical implications of failing to imagine in *Frankenstein*, **Samantha Morse**

## Individual presentations, LK304/305

- Artifice come to life: Mary Shelley's *Frankenstein* and Richard Powers *Galatea 2.2*, **Natalie Riley**
- The flesh and blood machine: (D)Evolutionary thought and cultural anxieties in H.G. Well's *The Island of Doctor Moreau*, **Madalina Meirosu**
- Becoming monstrous, becoming human: Contamination and reproduction in *Oryx & Crake*, **Mexitli Nayeli Lopez Rios**
- The Haunting of Waverly Hills: Tuberculosis in the public imagination, **Jessica Hume**

## Individual presentations, LK306

- Listen to the doctors: Graphic medicine in Taiwan, **Pin-chia Feng**
- Making medicine strange, **Tod Chambers**
- *Frankenstein*: or, a meditation on (complicated) grief in the era of a new death, **Maité Snauwaert**
- Bodily capacity beyond pathology: towards an embodied intersubjectivity in Ruth Ozeki's *A Tale for the Time Being*, **Kathryn Cai**

## Panel discussion, LK120

- THE UNCANNY X-PANEL: From *Frankenstein* to *Logan* - Bodily narratives in the X-Verse, **Danielle Spencer, Saljooq Asif, Scott Bukatman**

## Panel discussion, LK203/204

- Is empathy a monster? Social regulation of human connection, **Caroline Wellbery, Elizabeth Segal, Jamil Zaki**



# Concurrent sessions - Saturday

3:00pm - 4:00pm

## Individual presentations, LK205/206

- America's monstrous doctors: Frankenstein, race, and Islamophobia, **Bassam Sidiki**
- The Lucifer Effect: Hubris in Frankenstein and the Stanford Prison Experiment, **Scott Harshbarger**
- Fellow-creatures and Fellow-devils: Citizenship and belonging in Mary Shelley's *Frankenstein*, **Lillian Lu**

## Individual presentations, LK304/305

- Narrative medicine and health (in)humanities: Transcorporeal reading, **Lesley Larkin**
- Weight stigma reduction among medical students through narrative medicine, **Rachel Fox, Kelly Park**
- Consuming fictions: self-report evidence of the benefits and dangers of fiction-reading for eating disorders, **Emily T. Troscianko**
- Frankengenre: Narrating the constructed body, **Ellen Peel**

## Individual presentations, LK306

- Reconfiguration of Alzheimer's disease in Dana Walrath's *Aliceheimer's: Alzheimer's Through the Looking Glass*, **Raghavi Ravi Kasthuri, Anu Mary Peter**
- Negative capability as an ethic of empathy: Practicing narrative medicine with John Keats in mind, **Mary Taylor Mann**
- The fragmentation of fatherhood: An exploration of grief narrative in Chaplin's "The Kid," **Jane Hartsock**
- Breaking the walls of humanities in a psychiatric institution: mental health care through documentary film, **Glória Alinho**

## Panel discussion, LK120

- Stigma and sensibility: The face of the other in Frankenstein, **Andrew Childress, Christos Lazaridis, Christopher Scott**

## Panel discussion, LK203/204

- The medical humanities scholarly concentration: Monstrous curricular appendage or inspired supplement?, **Megan Voeller, Michele DeMuth, Jeffrey Lee, Benjamin Richter**

# Concurrent sessions - Sunday

9:45am - 12:30pm

## Poster Session C, LKSC Lobby

- Legacy project: Wisdom from lives well-lived, **Jocelyn Tseng, Aheli Chattopadhyay, Linda Dackman, William Patrick Shibley**
- Blaming the "monster", **Priya Dave**
- Humane white coats: Addressing the monster of a globalized, balkanized garment industry, **Jason DuBroff**
- The composite body today: Narrative medicine and its challenge to holism, **Daniel Laforest**
- What's up Doc? Treating children in chronic pain: Why medicine should think less doctor, more storyteller, **Mary Lockwood**
- Popular medical mnemonics: A visual exploration, **Nick Love**
- Frankenstein's Monster as manipulator and gaslighter, **Emma McClure**
- A Closet in Ingolstadt: Mixing media messages and LGBTQ identities, **Krisann Muskievicz, Zoe Whitworth**
- The essential role of narrative medicine in global health ethics & sustainable medical interventions, **Mohan Sudabattula**
- ...still, I am you: Monologue of a malformation, **Arany Uthayakumar**
- Karl Brant: The Nazis doctors are not born, they are made, **Alyssa Burgart**

# Concurrent sessions - Sunday

10:00am - 11:00am

## Individual presentations, LK205/206

- Ancestors, DNA, and time travel in Octavia Butler's *Kindred*, **Angela Rovak**
- Black Frankenstein in the age of #BlackLivesMatter, **Belinda Waller-Peterson**
- "To race prejudice, once roused, any horror was possible": White supremacy and black medical science in *The Marrow of Tradition*, **Phillip Barrish**
- "The Monster Weeps with Safie": Reading digital health against Native epistemologies, **Olivia Banner**

## Individual presentations, LK306

- Representations of mental illness in children in photographic essays and the question of vulnerability, **Agnese Sile**
- Human, but barely: A rhetorical analysis of NICU memoirs, **Jennifer Edwell**
- The shadow side of nursing: the power of the ordinary and the extraordinary in popular culture, **Margaret McAllister**
- Frankenmothers: Wordsworth's maternal monsters and the Eighteenth-century obstetric imaginary, **Emily Waples**

## Flash presentations, LK304/305

- How to create a monster: A study on the production of patient charts and the standardization of medicine, **Kacper Niburski, Nelson Adams**
- Kanashibari and the Night-Mare: Sleep paralysis in folklore, **Pria Anand**
- A cinematic take on the monsters of medicine and culture, **Latoya Frolov, Alexander Frolov**
- The monsters we create: Vaccine hesitancy, anti-smoking campaigns, and responsibility in rhetoric, **Anne Feng**
- Intersectionality in contrast and complement: end-of-life spiritual care for LGBT elders, **Tyler Fair**

## Panel discussion, LK120

- Taming the trans-disciplinary health humanities creature through research, **Craig Klugman, Sarah Berry, Siobhan Conaty, Peggy Determeyer, Erin Lamb**

## Workshop, LK203/204

- The notion of monstrosity in historical epistemology, **Mathieu Corteel**

11:15am - 12:15pm

## Individual presentations, LK205/206

- Do cancer biomarkers have a philosophical nature?, **Jean-Cassien Billier**
- The Frankenstein myth and moral meaning in bioethics, **Courtney Campbell**
- Frankenstein and bioethics beyond chance and choice, **Shane Denson**
- Monstrous and/or ordinary men and women: Lessons from the Nazi war machine, **Linda Raphael, Marc Raphael**

## Individual presentations, LK304/305

- Posthumous conviviality and the tragedy of the dead body commons, **Orla O'Donovan**
- Re-membering the sick: Dismemberment and horror in the use of medical technology, **Luke Olsen**
- The corpse as kairotic body: Transgressing the medicalized boundary between life and death to re-animate physicians as ethical practitioners, **Susan Sample**
- "Monster of [Our] Own Creation": Constructing the opioid epidemic, **Sasha Kruger, Katie Grogan**

## Panel discussion, LK120

- The human egg: foundation of the oocyte donation program at Stanford, psychological evaluation of donors and recipients, cultural and scientific history, **Carlos Seligo, Lynn Westphal, Katherine Williams**

## Panel discussion, LK203/204

- Frankensteinian collaborations: Creating "HeART stories: Building empathy through the arts," **Charles E Pohl, Susan Shifrin, Jeffrey Lee**

12:30pm - 1:30pm

## Panel discussion, LK304/305

- Marketing the health humanities: Sharing techniques for promoting educational initiatives, **Claire D. Clark, Raven Piercey, Lise Saffran, Helen Valier**

## Panel discussion, LK120

- Written in the body: Narrative practices in the clinic, **David Elkin, Tina Toutoungi**

## Workshop, LK203/204

- Integrating creative arts in health care, **Julia Vishnepolsky**



[med.stanford.edu/medicineandthemuse](http://med.stanford.edu/medicineandthemuse)

[healthhumanitiesconsortium.com](http://healthhumanitiesconsortium.com)

[frankenstein.stanford.edu](http://frankenstein.stanford.edu)



Stanford Visitor (no password required)

#hhc2018



@StanfordF200



stanford\_frankenstein200



**Stanford**  
MEDICINE

Medicine & the Muse  
Center for Biomedical Ethics