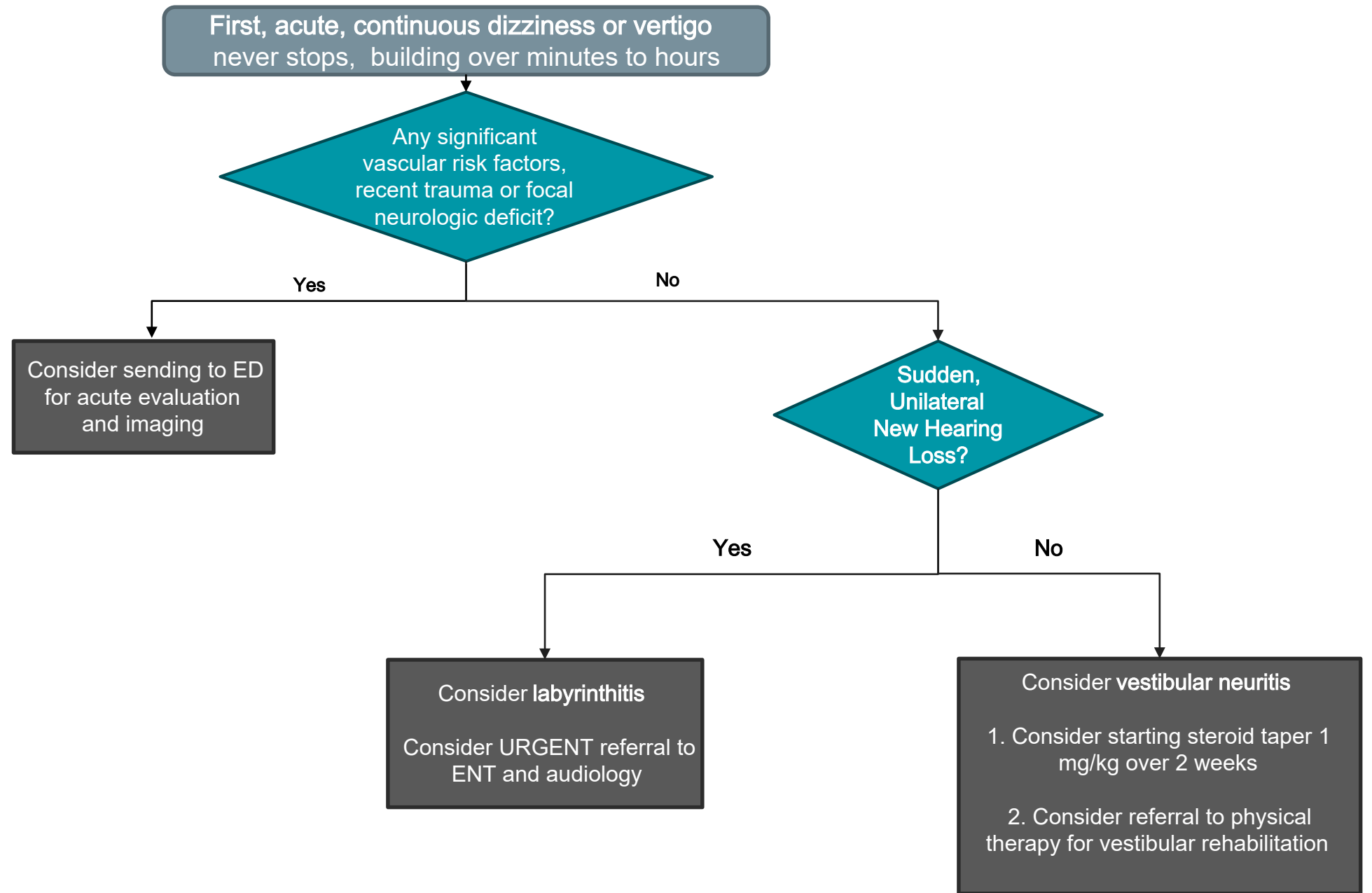
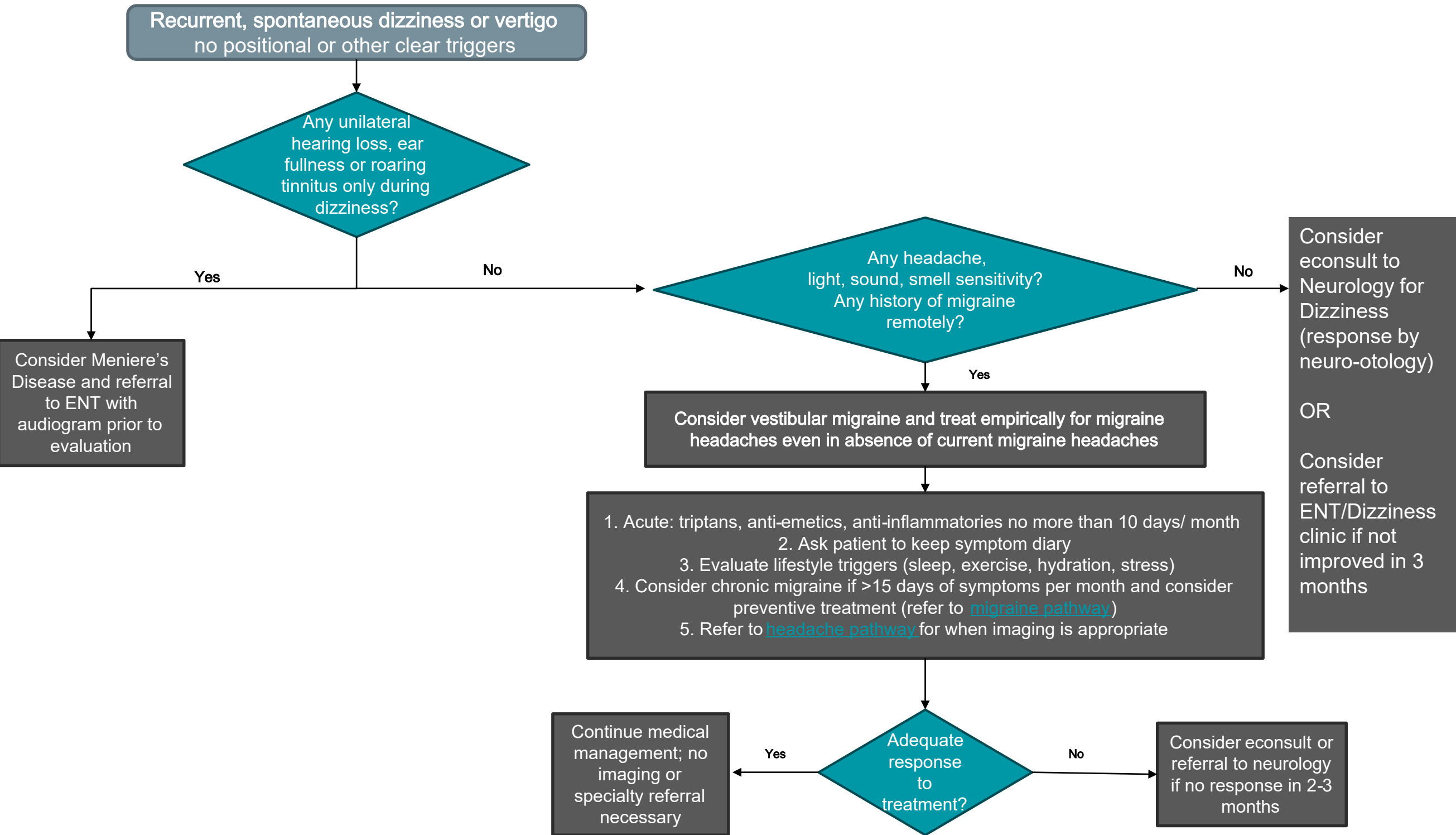


CT head is never appropriate for dizziness evaluation in the outpatient setting

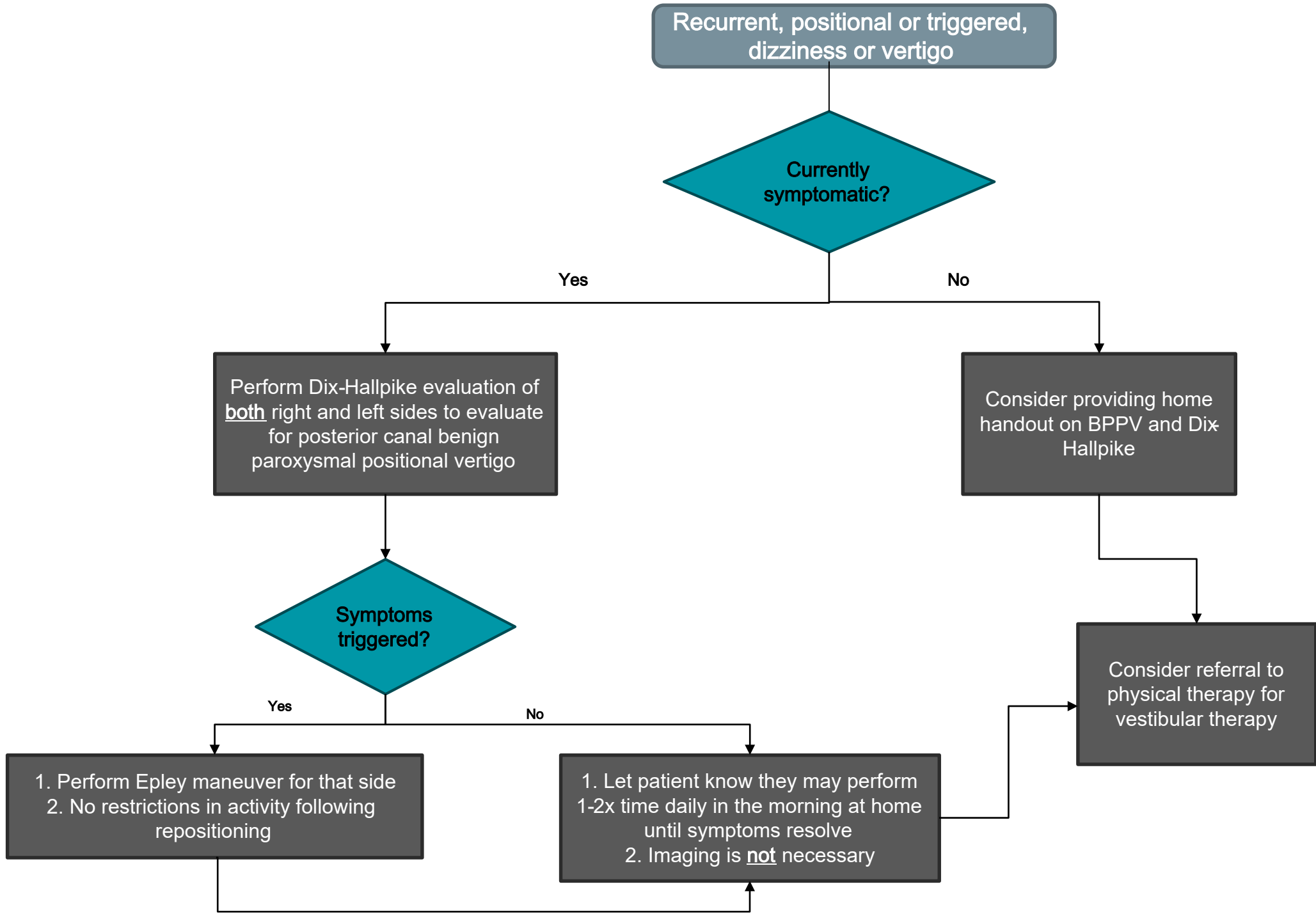
\* CDC Steady Algorithm for fall risk assessment: <https://www.cdc.gov/steady/pdf/steady-algorithm-508.pdf>



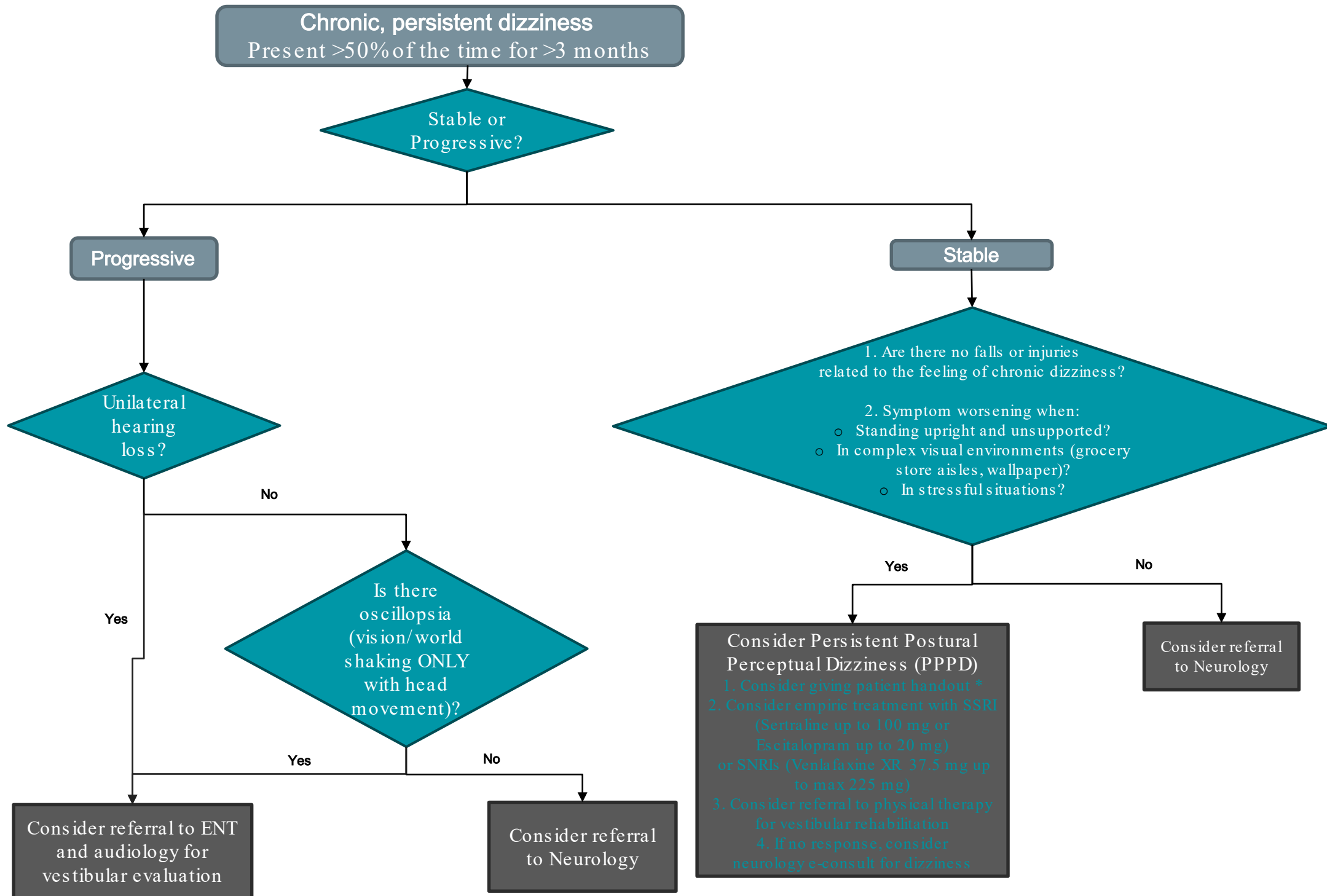
CT Head is never appropriate for dizziness evaluation in the outpatient setting



**CT Head is never appropriate for dizziness evaluation in the outpatient setting**



CT Head is never appropriate for dizziness evaluation in the outpatient setting



**CT Head is never appropriate for dizziness evaluation in the outpatient setting**

\*(Jon Stone handout FND: [https://www.neurosymbols.org/en\\_GB/symptoms/fnd-symptoms/dizziness-including-pppd-persistent-postural-perceptual-dizziness/](https://www.neurosymbols.org/en_GB/symptoms/fnd-symptoms/dizziness-including-pppd-persistent-postural-perceptual-dizziness/))

\*\* BMJ article 2018 <https://pn.bmj.com/content/18/1/5> (Popkirov S, Staab JP, Stone J. Persistent postural-perceptual dizziness (PPPD): a common, characteristic and treatable cause of chronic dizziness. *Practical Neurology* 2018;**18**:5-13.)