



BNGAP

*Building the Next Generation
of Academic Physicians*

Leadership & Academic Medicine Conference: Opportunities for Diverse Medical Students & Residents

FEBRUARY 1-2, 2019

UC Davis School of Medicine
Education Building
4610 X Street
Sacramento, CA 95817

REGISTER AT:

<http://bngap.org/registration-leadership-and-acad-med-conf/>

- Learn the roles, responsibilities, & benefits of engaging in various medical school offices
- Navigate the array of leadership opportunities in medical school offices or organizations
- Explore academic medicine careers to fit personal & professional interest
- Expand networks among academic medicine colleagues & role models

Open to all but tailored to encourage trainees (medical students, residents) who are underrepresented in academic medicine (women, LGBTQ, and racial/ethnic minorities) to consider leadership opportunities during medical school, residency, and a future career in academic medicine

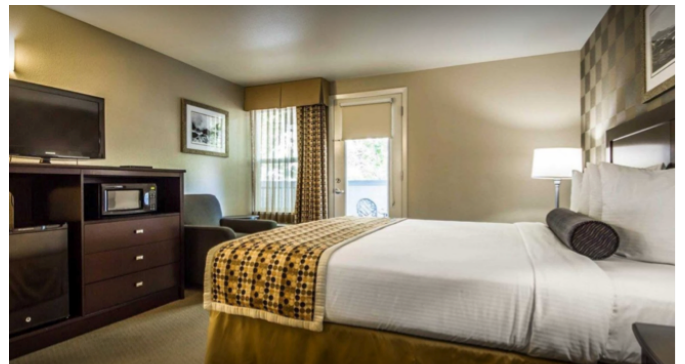
UCDAVIS
SCHOOL OF MEDICINE

BNGAP | Building the
Next Generation of
Academic Physicians

BNGAP Accommodations



Courtyard Marriott, \$129/night
 4422 Y Street, Sacramento, CA 95817
 916-455-6800
<https://www.marriott.com/hotels/travel/saccy-courtyard-sacramento-midtown/>



Hotel Med Park, \$123/night
 2356 Stockton Blvd, Sacramento, CA 95817
 916-455-6800
<https://www.marriott.com/hotels/travel/saccy-courtyard-sacramento-midtown/>

Directions to the UC Davis School of Medicine:

Education Building 4610 X Street, Sacramento, CA 95827

From the North: (Sacramento International Airport, Redding)

1. Take I-5 South to Business 80/Capital City Freeway East (Reno)
2. Follow Business 80/Capital City Freeway East to Highway 50 (Placerville)
3. Take the 34th St. exit and turn left onto 34th St.
4. Turn right onto T St.
5. Turn right onto Stockton Blvd.
6. Continue past UC Davis Medical Center
7. Turn left onto X St.

From the East: (Placerville, Lake Tahoe)

1. Take Highway 50 to the Stockton Blvd Exit.
2. Turn left onto Stockton Blvd.
3. Continue past UC Davis Medical Center.
4. Turn left onto X St.

From the South: (Stockton, Los Angeles)

1. Follow Highway 99 or I-5 North to Business 80/Capital City Freeway East (Reno).
2. Exit at T St.
3. Turn right onto T St.
4. Turn right onto Stockton Blvd.
5. Continue past UC Davis Medical Center
6. Turn left onto X St.

From the West: (Davis, San Francisco)

1. Take Business 80/Capital City Freeway east (Reno) to Highway 50 (Placerville)
2. Take the 34th St exit and turn left onto 34th St.
3. Turn right onto T St
4. Turn right onto Stockton Blvd.
5. Continue past UC Davis Medical Center.
6. Turn left onto X St.

Parking: Map, Page 2

The cost to park in all locations is the same: \$2 per hour (or fraction thereof) with a maximum charge of \$12 per day. Please note, however, that some areas have maximum stay time limits.
 The closest lots for are 14, 16 and Parking Structure #2.

Employee Parking & Shuttle Services Map

(916) 734-2687

Parking and Transportation Services

4800 2nd Avenue, Suite 1100
Sacramento, CA 95817

For additional information, visit:
<http://ucdmc.ucdavis.edu/parking>

**UCDAVIS
HEALTH**

