

2023 Spectrum Pilot Grants in Community Engagement

Applicant Information Session

Tuesday, February 14, 2023

Wei-ting Chen, PhD
Executive Director
Office of Community Engagement



Stanford
MEDICINE

Office of
Community Engagement



Stanford
MEDICINE

Spectrum

Stanford Center for Clinical and
Translational Research and Education

Agenda

1. Introduction to the Office of Community Engagement
2. Overview of the 2023 Request for Proposals
3. Eligibility and Other Requirements
4. Application Timeline
5. Q&A





Office of Community Engagement

Established 2005

Our Mission:

To be a national and international leader in developing innovative models of engagement, nurturing community partnerships, and designing and implementing rigorous projects that promote health equity for diverse populations.

How we support:

We are part of the Office of the Senior Associate Dean for Research and Spectrum, and we provide resources and guidance to research teams interested in undertaking community-engaged research.

Website: <https://med.stanford.edu/oce.html>

Office of Community Engagement Team



Lisa Goldman Rosas, PhD MPH
Faculty Director



Patricia Rodriguez Espinosa, PhD MPH
Associate Director of Research



Wei-ting Chen, PhD
Executive Director



Yessica Martinez Mulet, MS
Community Engagement
Research Coordinator



Cristina Mancera, MA
Community Engaged Research
Capacity Building Manager



Glenda Estioko
Administrative
Manager

CTSA Community Engagement Aims

1. **Build capacity for community-engaged research**
 - **Build capacity** among researchers and community partners to support effective engagement in the full spectrum of translational research activities.
 - Develop, evaluate, and disseminate innovative strategies for **community engagement in all phases of the clinical and translational research** process.
 - Establish **community-based support** to promote novel approaches to testing and implementing discoveries for uptake and adoption.
2. **Advance the science of community engagement**
3. **Foster translation of research into practice**

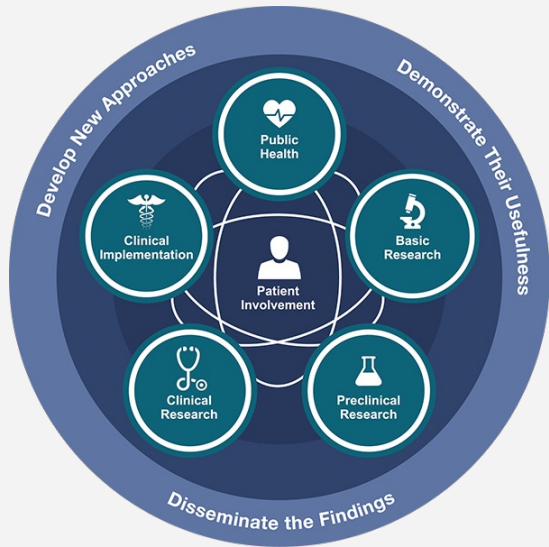


Stanford
MEDICINE

Spectrum

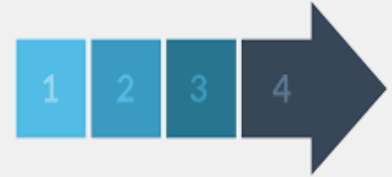
Stanford Center for Clinical and
Translational Research and Education

Facilitate translational science that integrates the community in all phases to promote health equity



Community

- Patients and caregivers
- Community based organizations
- Federally qualified health centers
- Local public health departments
- Policy makers
- Other key stakeholders



Phases of research

- Identification of research priorities
- Research design
- Study implementation
- Analysis
- Translation into practice

Intent of Spectrum Community Engagement Pilot Awards

Provide Seed Funding to Support:

- Development of **new** community-engaged research **partnerships** with shared leadership responsibilities by Stanford researchers and community partners.
- **Generation of pilot data** for community-engaged or community-partnered research studies that will lead to external funding.
- **Implementation and evaluation** of innovative community engagement methods.



What do we mean by “community-engaged” research?



- The projects must have a community engagement component that clearly demonstrates community partners’ input in the design and implementation of the proposed project.
- Community partner with equal decision-making authority is required to be part of proposals as co-investigators.
- The budget allocates sufficient resources to enable and accommodate community partner’s involvement in the research process.

Who is a “community partner”?

- A “community partner” could be an individual, an organization, or a representative of an organization.
- The community partner should make substantive and meaningful contribution to the proposed project through the formulation of research questions, study aims, or shape study design.



What we look for in proposals

We are looking for evidence that the teams are prepared to integrate the expertise of community partners and researchers seeking to improve the community through collaborative, partnered research.

<i>Community Perspective/Experience</i>						
We do not know about this project	We may or may not be aware of this project but our information informed it	Researchers met with us to present the project and asked for our input	Researchers provided opportunities for us to participate (e.g., recruitment, community advisory board)	We told researchers what questions we need answers for	We participated in all aspects, equitably	We fully own the research
No Community Involvement	Community Informed	Community Consultation	Community Participation	Community Initiated	Community Based Participatory Research	Community Driven/Lead
We had no contact with the community	We sat in on a meeting and learned a great deal	We met with several community organizations, they shared their concerns and gave us suggestions	We have a defined role(s) for community to participate in the research	We created the research in response to community identified issue(s)/question(s)	We developed the project together with community partners	The community is in charge and we support their efforts when asked
<i>Researcher Perspective/Experience</i>						

Figure 3. The Continuum of Community Engagement in Research: Perspective and Experience

Key, Kent D., et al. "The Continuum of Community Engagement in Research: A Roadmap for Understanding and Assessing Progress." *Progress in Community Health Partnerships: Research, Education, and Action*, vol. 13 no. 4, 2019, p. 427-434. Project MUSE, [doi:10.1353/cpr.2019.0064](https://doi.org/10.1353/cpr.2019.0064).

Tips for developing strong proposals

Do:



- Describe how the proposed project will enhance **health equity**
- Describe how **community partners' priorities** shaped the research questions and study design
- Describe how the proposed **partnership development** activities will enhance scientific endeavors and future research productivity
- Use letters of support to show strength/depth/readiness of partnership, including how you plan to **resolve conflicts** in the process of collaboration
- Use **budget** to show how adequate level of resources are allocated to partners' participation in the research

Don't:



- Submit a standard scientific research proposal without any attention to community engagement
- Make claims about applying community based participatory research (CBPR) principles or other engagement methods without corresponding evidence in the narrative
- Submit the proposal without a detailed letter of support from your community co-investigator
- Submit a budget without allocating resource to your community co-investigator

Review Process

- OCE staff reviews all applications and advances complete proposals to review panel
- Review panel consists of: OCE staff, at least one (1) community partner who has received award in the past, and at least one (1) other Spectrum program staff outside of OCE
- Review merit of the entire proposal: narratives for study feasibility and rigor, budget and budget justifications, letters of support...

Scoring criteria (not exhaustive):

- Defines community Co-I's roles, expertise, and contributions clearly
- Defines how the proposed project will address health equity and working with under-resourced communities
- Demonstrates application of community-engaged research (CEnR) and/or community based participatory research (CBPR) best practices
- Demonstrates how the research team engages with community partners
- Demonstrates that the proposed project is responsive to community partner needs and use of funds reflect adequate sharing of resources with community partner(s).
- Demonstrates how project team will address potential conflicts between Stanford team and community partners
- Plans for sustainability or additional collaborations are described (i.e., what is this seed grant contributing to in the long-run).

Additional recommended foundational reading

- Wallerstein, N., Duran, B., Oetzel, J., & Minkler, M. (2018). *Community-Based Participatory Research for Health: Advancing Social and Health Equity (3rd ed.)*. Hoboken, NJ: Jossey-Bass.
- Grumbach, K., Vargas, R., Fleisher, P., Aragón, T., Chung, L., Chawla, C., et al. (2017). *Achieving Health Equity Through Community Engagement in Translating Evidence to Policy: The San Francisco Health Improvement Partnership, 2010-2016*. UCSF. Report #: ARTN E27.
<http://dx.doi.org/10.5888/pcd14.160469>
- Ortiz, K., Shea, J., Nash, L., Oetzel, J., Garoutte, J., Sanchez-Youngman, S., & Wallerstein, N. (2020). *Partnerships, processes, and outcomes: A health equity-focused scoping meta-review of community-engaged scholarship*. *Annual Review of Public Health*, 41, 177-199.
- [CDC ATSDR: Models and Frameworks for the Practice of Community Engagement](#)
- [Policy Link: Guide for Community-Based Participatory Research](#)

Support for awardees

- OCE staff will provide or point awardees to resources or tools that aid the researchers and community partners in developing strong research partnerships.
- Spectrum Community Engagement Pilot Awardees are offered one year of free, in-depth or long-term technical assistance to spur growth for projects to generate future funding and research.

Eligibility Criteria

Who may apply:

- Academic Council Faculty
- Medical Center Line Faculty
- Clinician Educators (*PI Waiver may be needed, please contact assigned RMG contact*)

Important application requirements

- Background, Specific Aims, and Methodology (3-page limit, 11-point font; Standard NIH format; upload a single PDF).
- If applicable, include IRB approval numbers for animals and human subjects. If not yet approved, reference eProtocol submission status.
- NIH Biosketches for senior/key personnel at Stanford; most recent CV/resume for community partners.
- Budget and budget justification.
- Letters of support – **Minimum two (2) letters are required:**
 - One from faculty mentor or department chair.
 - One from community collaborator. The letter should clearly outline how the proposed project would benefit the community, how community input will be incorporated into the design and implementation of the study, or why additional support is needed for the development of a research partnership.

Application & Pilot Award Timeline

1/13/23

- RFP Released

2/28/23

- Application due at 11:59 PM (PT)

4/7/23

- Award Notification

7/1/23

- Funding cycle begins



Final thought



CEnR is all about relationships, respecting and honoring each other's expertise (scientific knowledge and community wisdom) and identifying new ways of solving complex social and medical challenges through research participation.

Contact information

Pilot Award Staff Lead:

Wei-ting Chen, PhD, Executive Director, Office of Community Engagement | weiting.chen@Stanford.edu

Pilot Award Faculty Lead:

Lisa Goldman Rosas, OCE Faculty Director | lgrosas@stanford.edu

Detailed application page: <https://seedfunding.stanford.edu/opportunities/2023-spectrum-community-engagement-pilot-grants>

Database of Spectrum Pilot Awardees: <https://med.stanford.edu/spectrum/funding-opportunities/grant-awardees-and-projects.html>

Q & A Time!

