



SCC Climate CBO Ecosystem Mapping Process



Santa Clara County Office of Sustainability

Rebecca Bromley-Dulfano, Tonya Veitch, Jasneet Sharma, Lisa Patel, MD

Background and Community Partners

To address the coming climate change impacts changes equitably, partnerships between Community-Based Organizations (CBOs) and governments are essential. Ecosystem mapping is one strategy that can be taken by local governments toward this goal. This ecosystem mapping in Santa Clara County (SCC) aimed to 1) **identify CBOs** doing climate work, 2) **assess the overall landscape** of efforts towards climate planning, 3) to better **understand the relationships between CBOs and the county** in terms of historical and current injustices experienced by their communities.

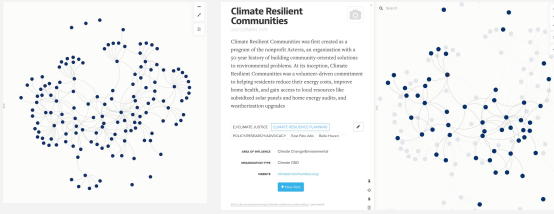


Methods

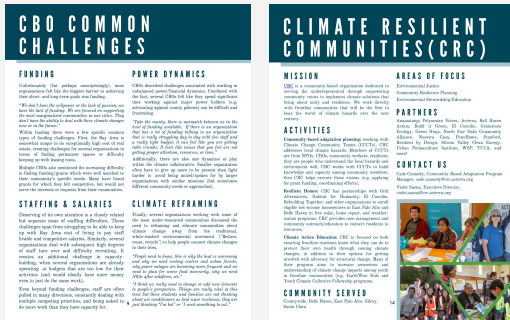
- Internet-based and snowball-sample search to identify and learn about climate CBOs in SCC.
- Semi-structured voluntary interviews with CBOs.
 - Questions were designed with input from Coastal Quest and Climate Resilient Communities.
 - 15 organizations were interviewed for 1 hr on organization background, goals, challenges, partnerships, and previous experience with and relationship with the county.

Results

We identified 131 CBOs across a variety of climate domains in SCC. A visual Ecosystem Map Visualization was created which enables filtering CBO by topic of focus and existing partnerships.



Interviews were summarized into a report collecting common themes on common challenges, historical context for this work in SCC, and expectations from CBOs on the county. The report also includes detailed information all the CBOs interviewees. Two samples pages are shown below:



Conclusions

We identified several core partners and leader CBOs with the expertise, interest, and capacity to partner with the SCC OOS in the planning and implementation of climate planning.

CBO Recommendations for the SCC OOS

- Ensuring appropriate compensation of CBOs for their involvement in community-based climate planning
- Supporting CBOs in securing grants through grant services and facilitating logistics for county-wide planning
- Building, maintaining, and investing in long-term relationships with CBO partners
- Taking a leadership role and demonstrating longitudinal commitment in the planning process.



Acknowledgements

We are extremely grateful to Tegan Hoffman, Tina Lee, and Gabi Polo from Coastal Quest and Violet Saena from Climate Resilient Communities for their input into all stages of this project. We are also immensely grateful to each of the incredible organizations who participated in this project giving their time and input into this process. RBD also thanks SCC OOS for providing the opportunity to be part of and Stanford SOM OCE for providing funding for this project.