

Characterizing patterns of cell-ECM architecture in lung tumor tissue using imaging

Aaron Chiou, Ph.D.

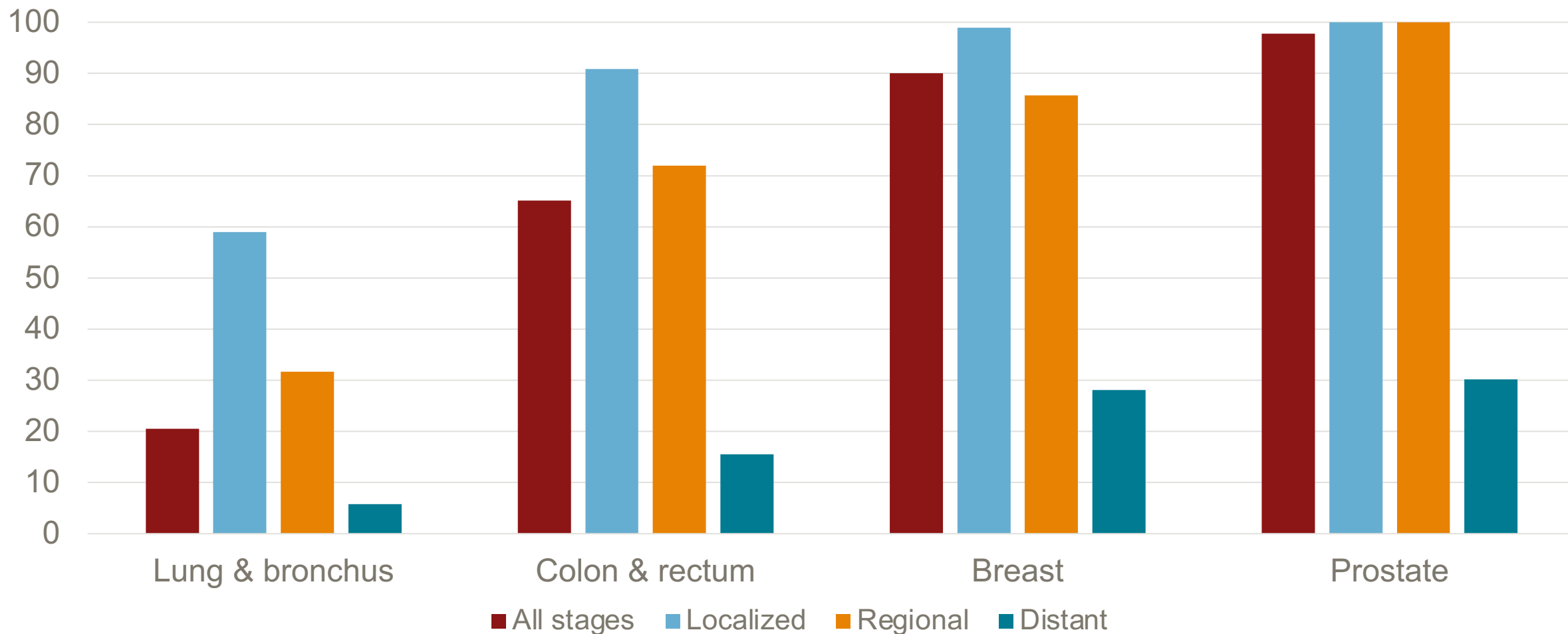
Mentors: Sylvia Plevritis, Ph.D.; Tushar Desai, M.D.

Stanford Cancer Imaging Training (SCIT) Seminar

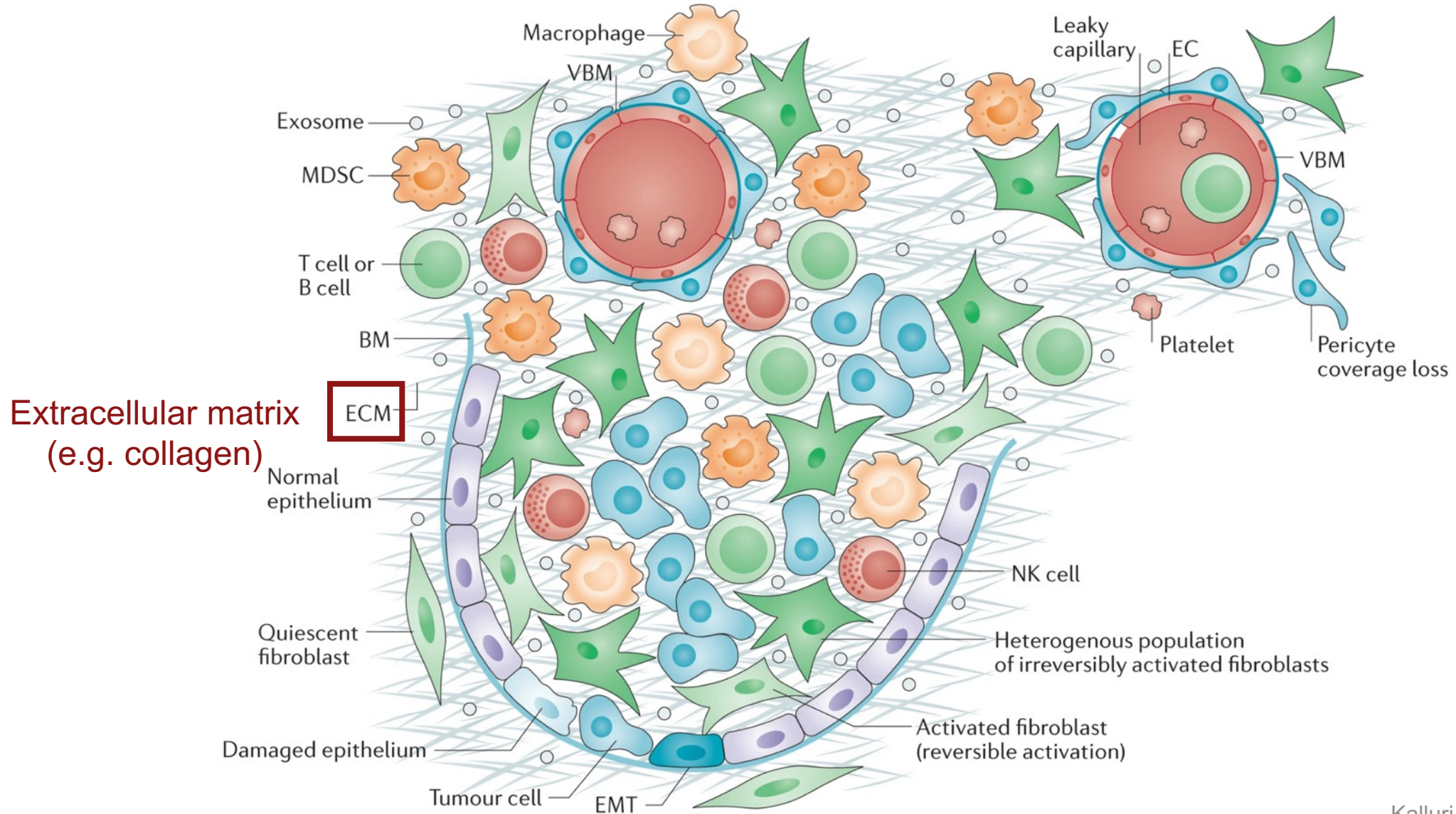
January 12, 2022

Lung cancer survival lags behind other common cancers

5-year survival rates (%) by cancer site and stage at diagnosis



Heterogeneity in the tumor microenvironment

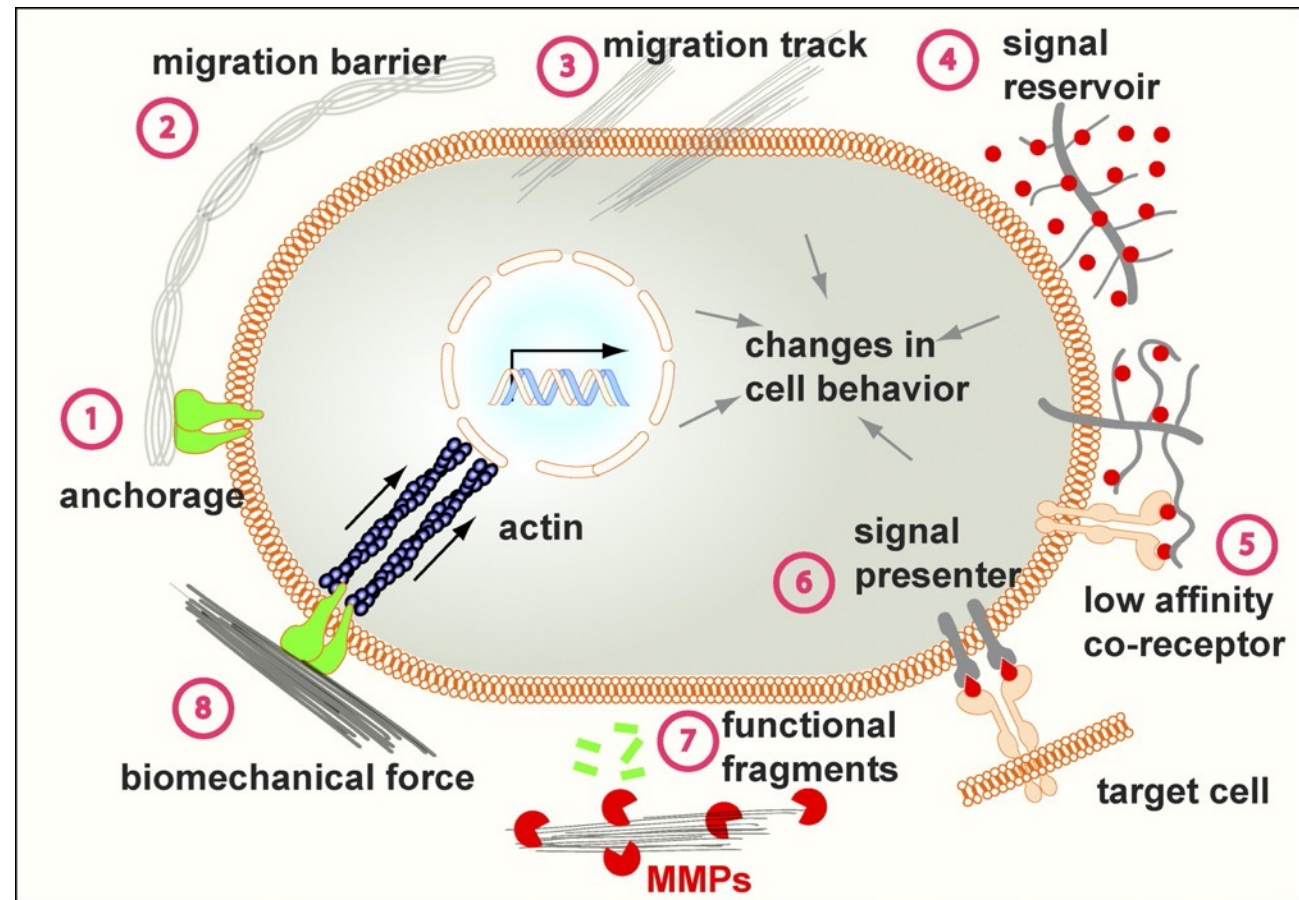


Extracellular matrix (ECM) impacts cell behavior

- Meshwork of proteins etc. outside the cell
- Deposited, remodeled, degraded by cells

Provides:

- Structural support to tissues
- Anchorage for cells
- Biochemical and physical cues



ECM and cancer

- ECM is altered in cancer
 - Amount
 - Organization
 - Composition
- Largely deposited and remodeled by cancer-associated fibroblasts (CAFs), which stiffens ECM and drives further signaling
- Physically guides cancer cell migration
- Blocks T cell infiltration into tumor
- Increases drug resistance by blocking drug diffusion

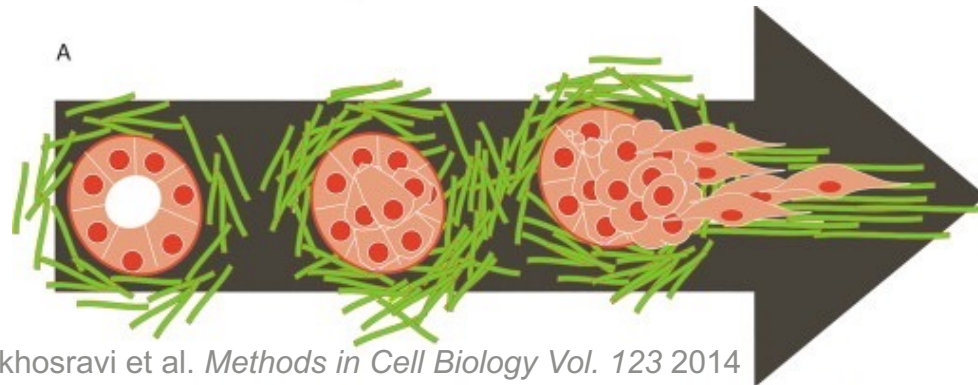
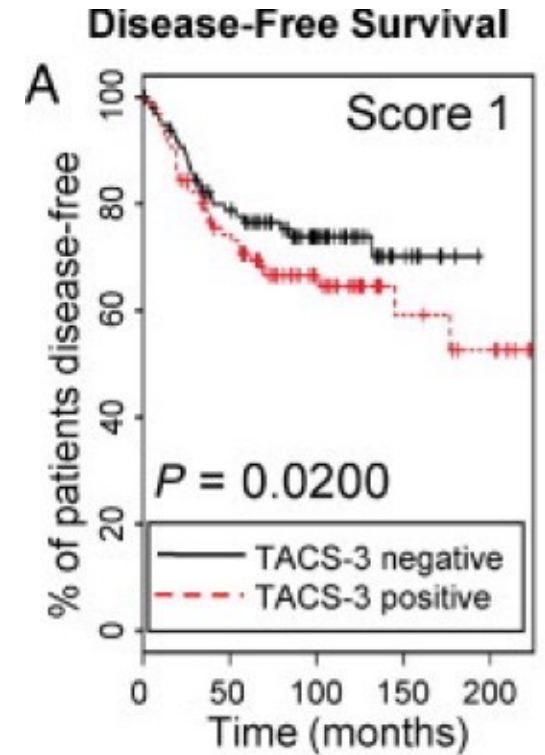
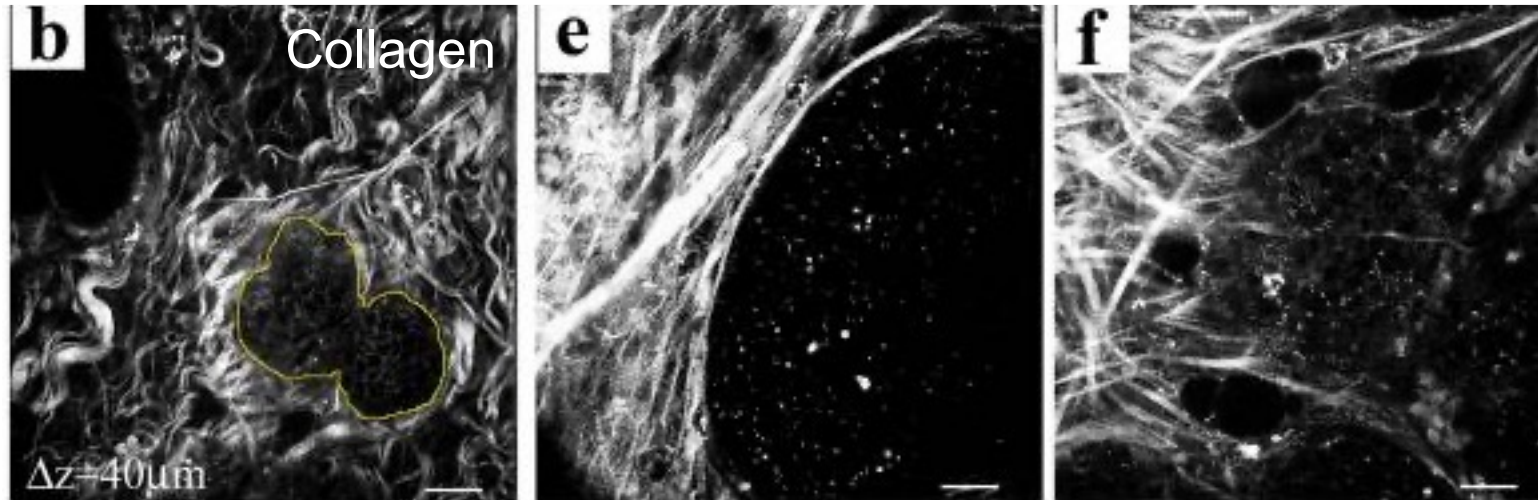
Aligned collagen is prognostic for breast cancer

TACS: tumor-associated collagen signature

TACS-1

TACS-2

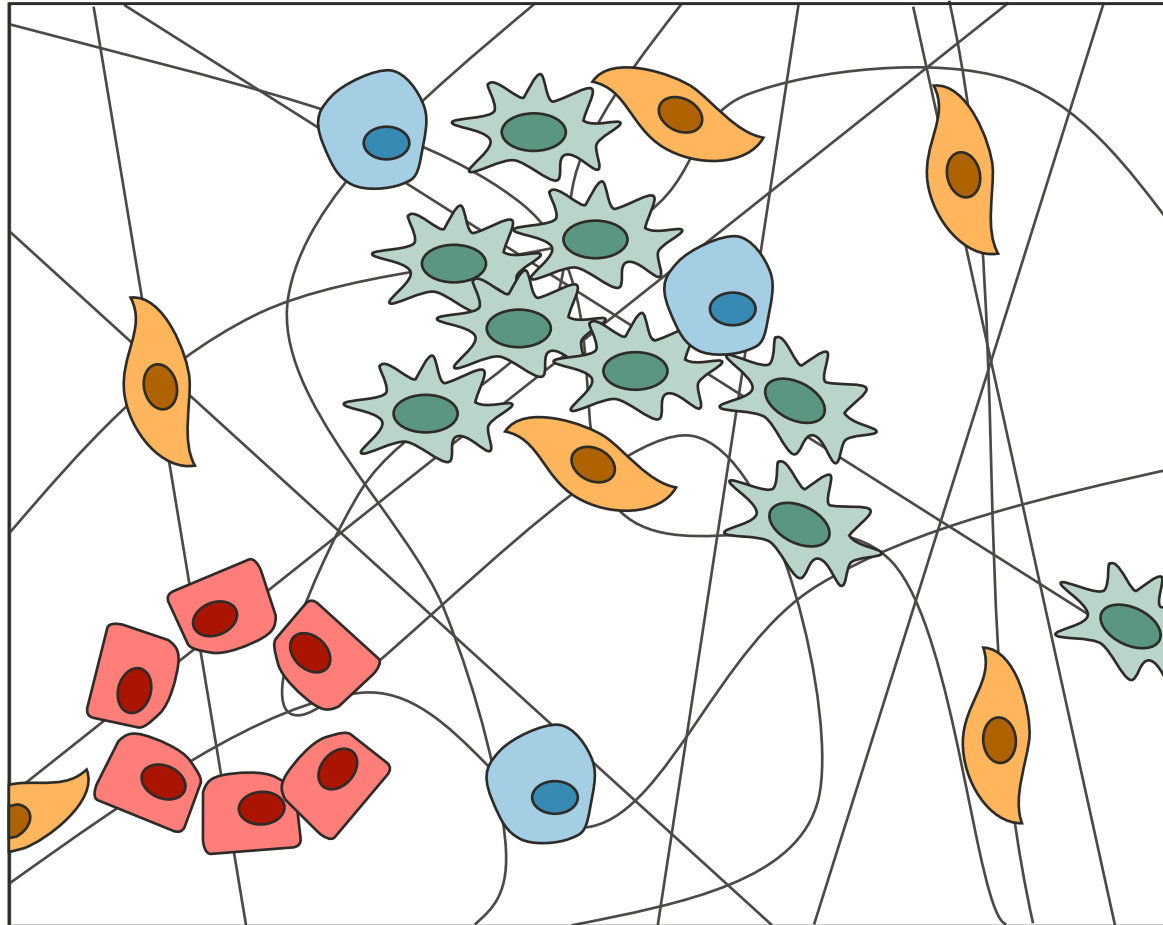
TACS-3



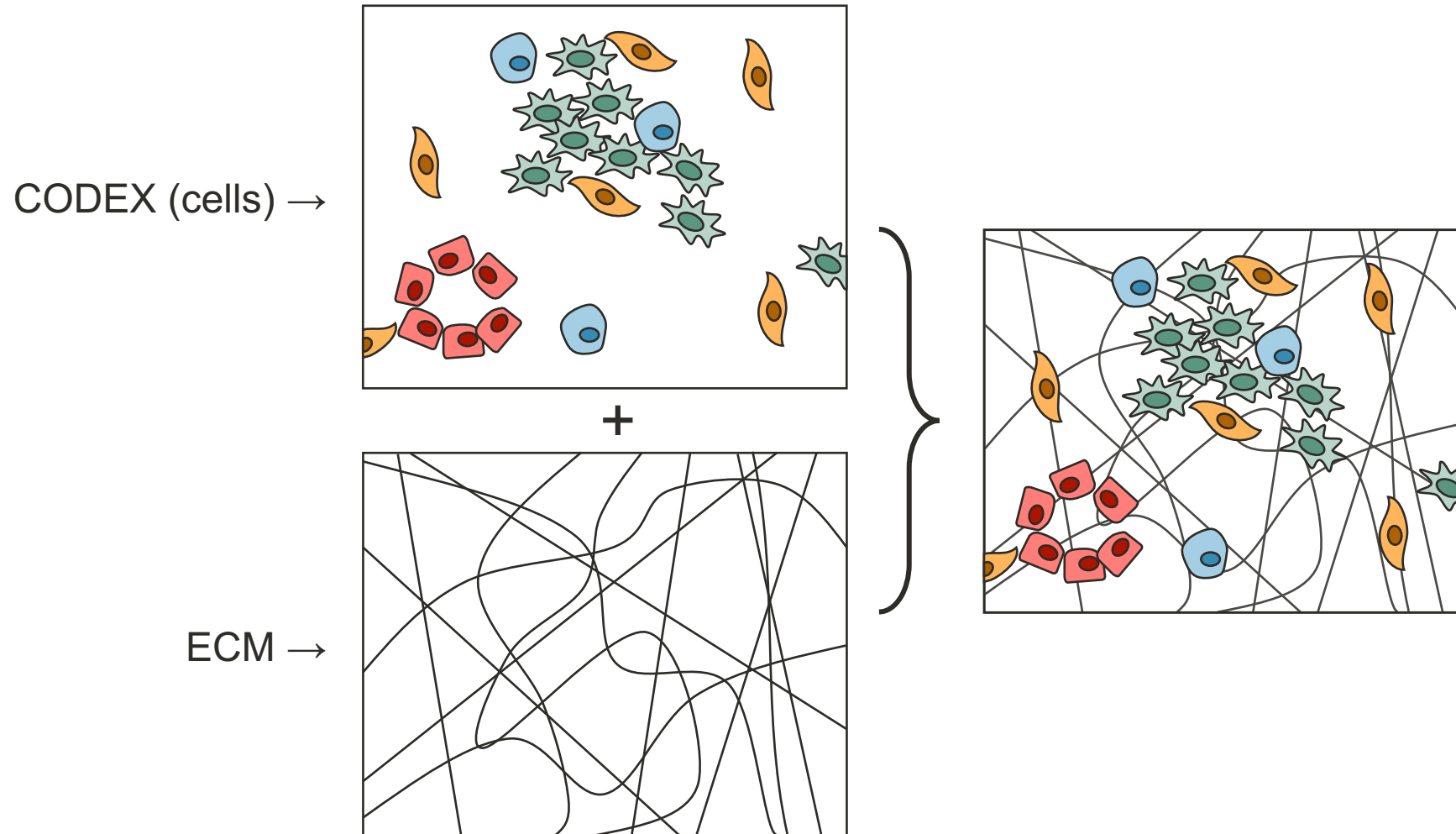
Keikhosravi et al. *Methods in Cell Biology* Vol. 123 2014

Provenzano et al. *BMC Med* 2006; Provenzano et al. *BMC Med* 2008; Conklin et al. *Am J Pathol* 2011

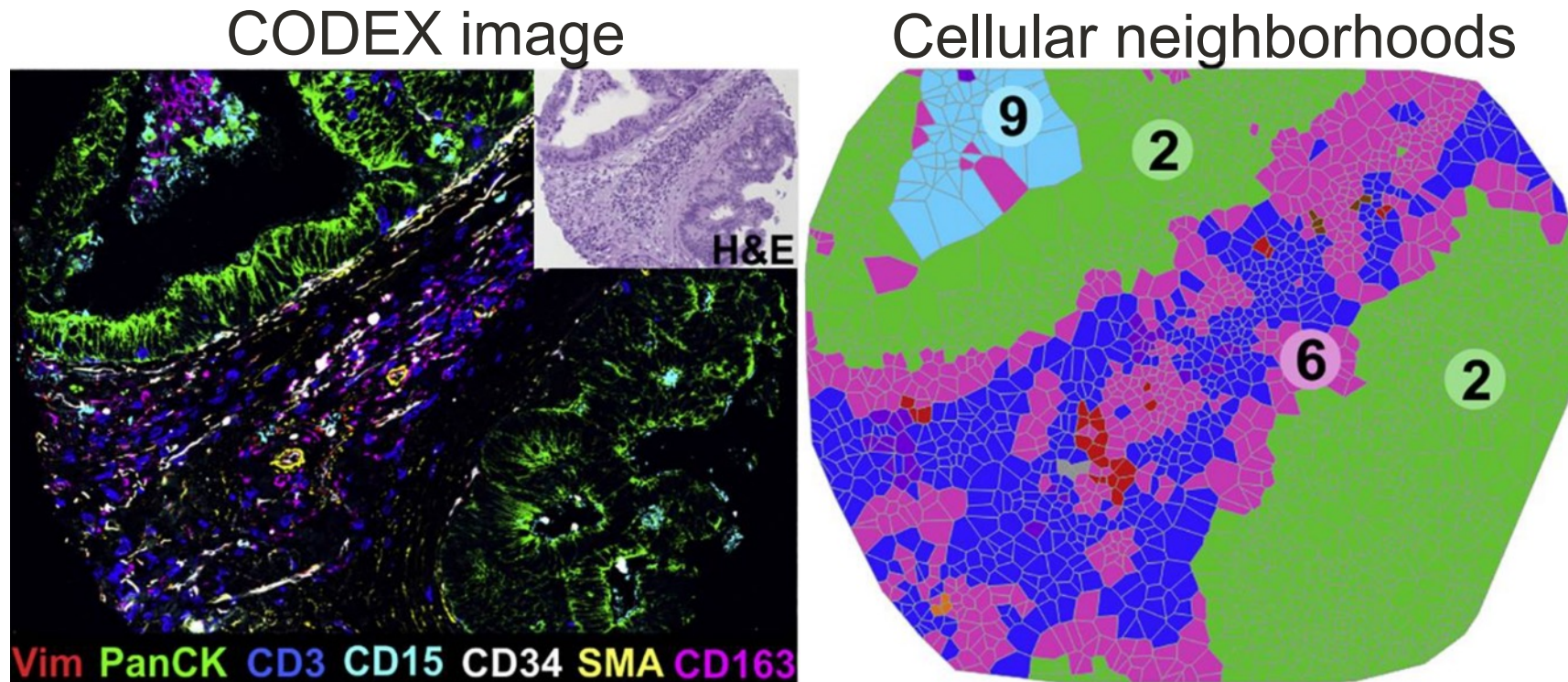
Overall goal: characterize spatial patterns of cell-ECM interactions in lung cancer using imaging



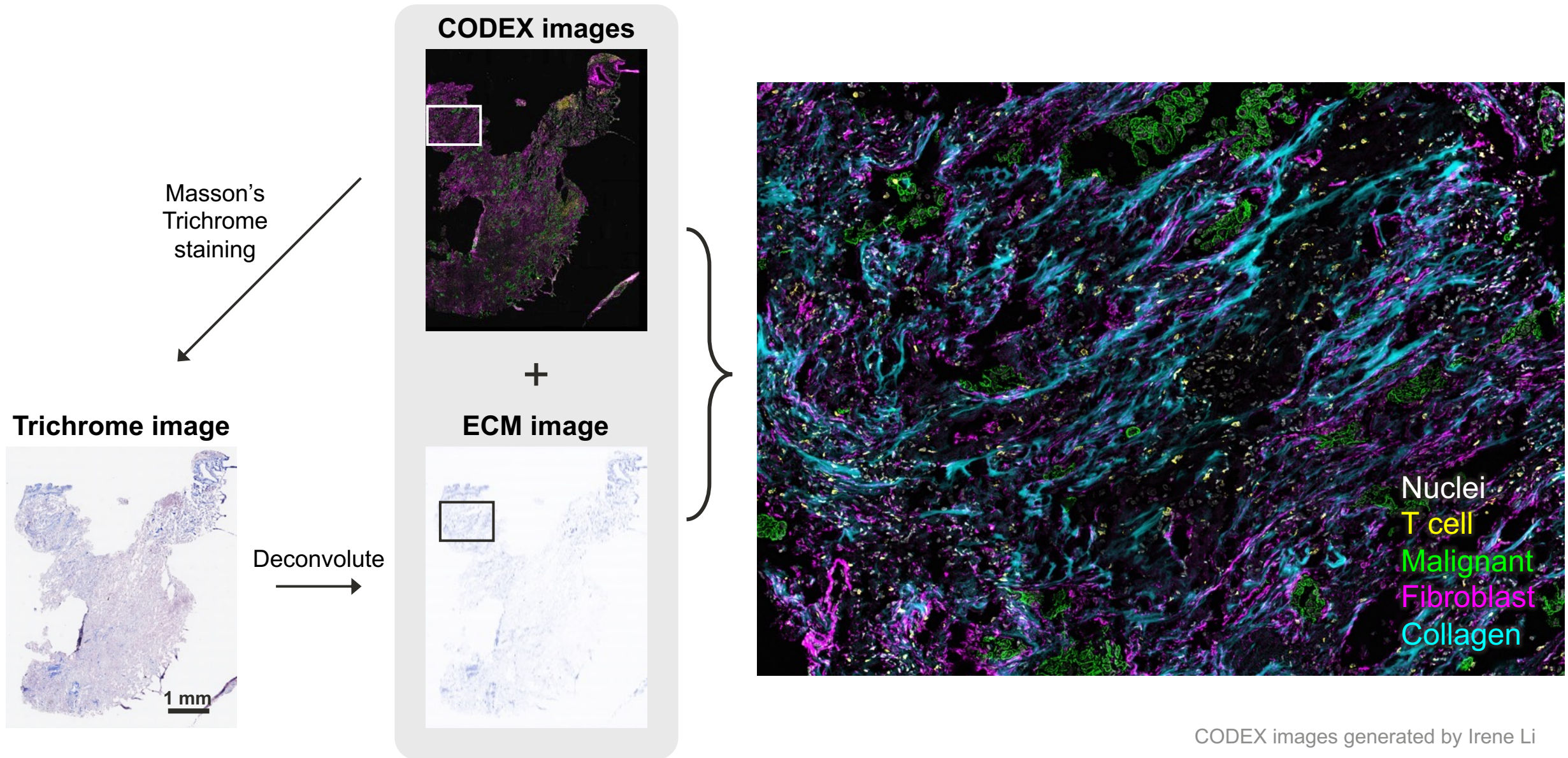
Part 1: integrating ECM imaging with CODEX



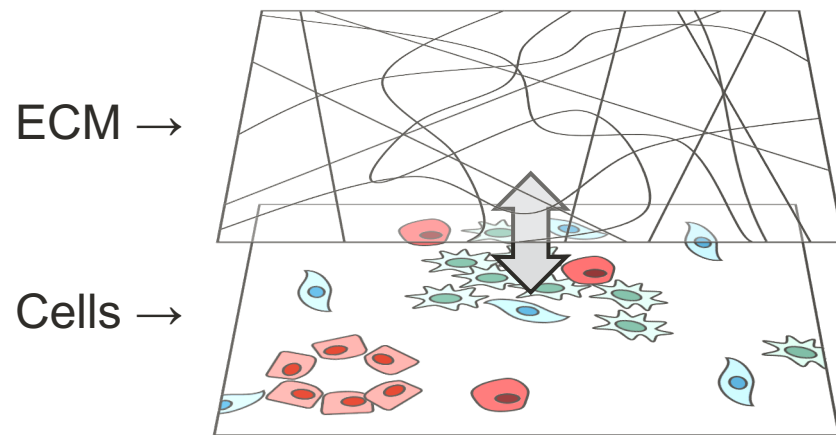
CODEX reveals cellular spatial heterogeneity



Collagen ECM visualized by Masson's Trichrome staining



Part 2: characterizing cell-ECM architecture

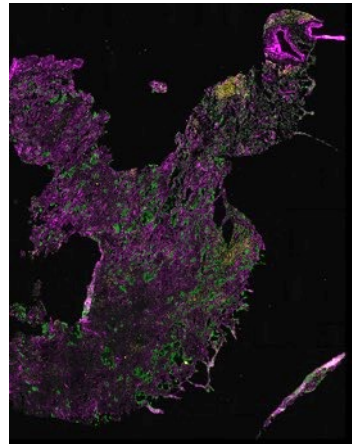


Are ECM and cellular features associated?

Current image analysis pipeline – same tissue section

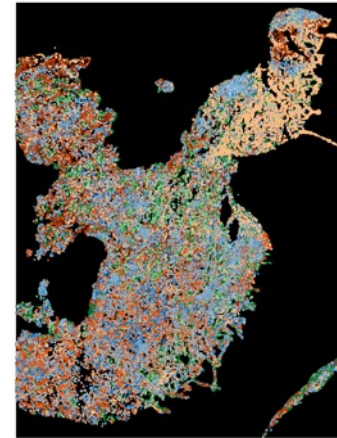
with Irene Li, Weiruo Zhang

CODEX images



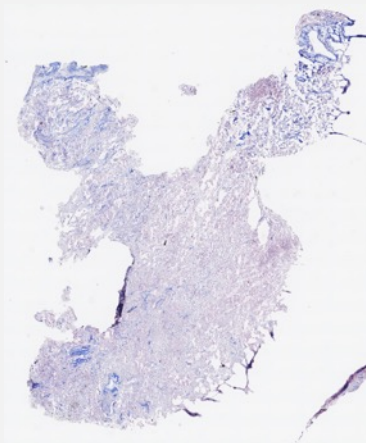
Process → Segment

Cell type identification



Cell-ECM
analysis

Trichrome image

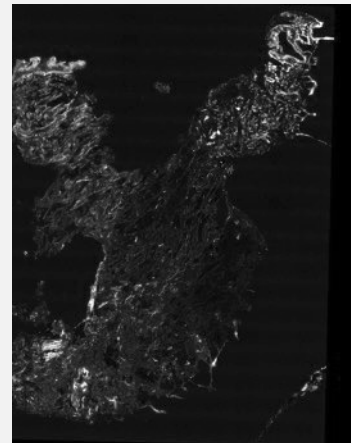


Deconvolute →

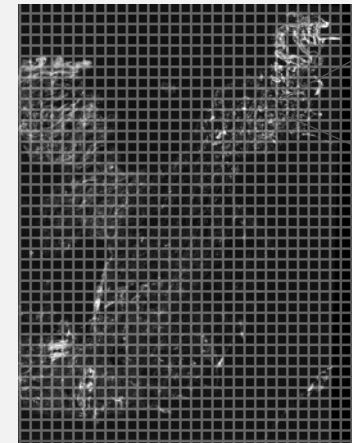
ECM image



Register
Invert

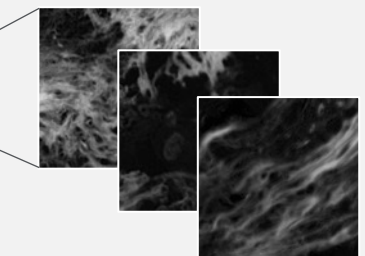


Patch →



100 µm x 100 µm patches

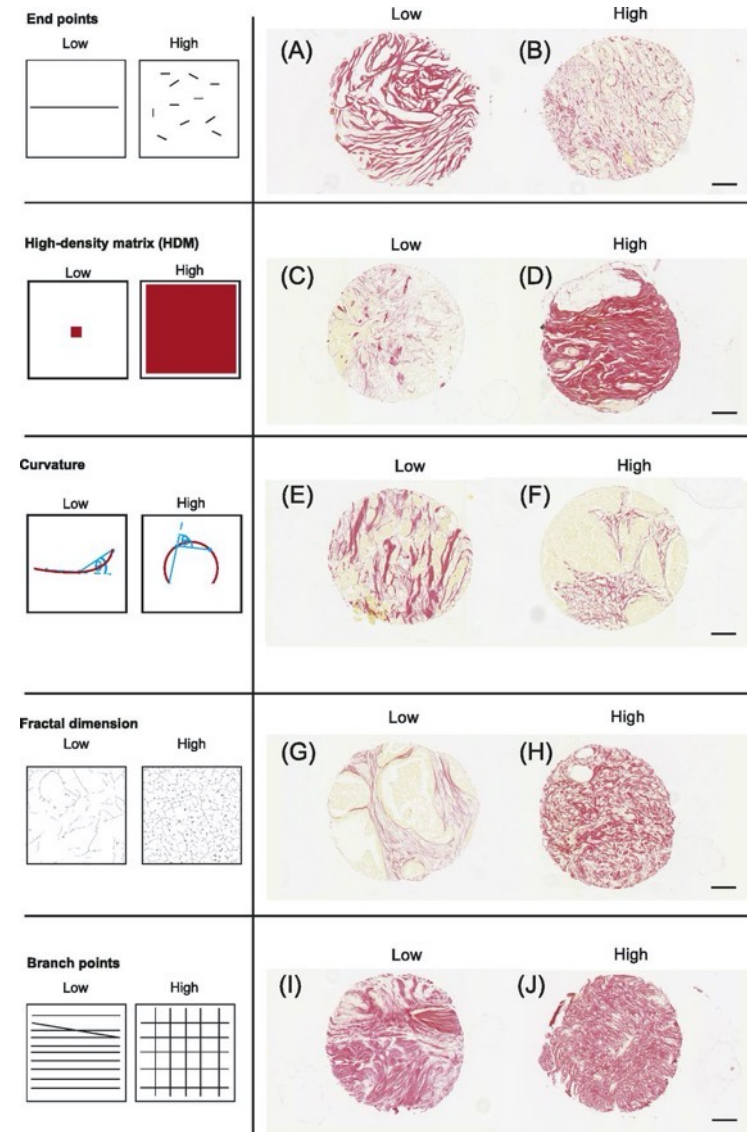
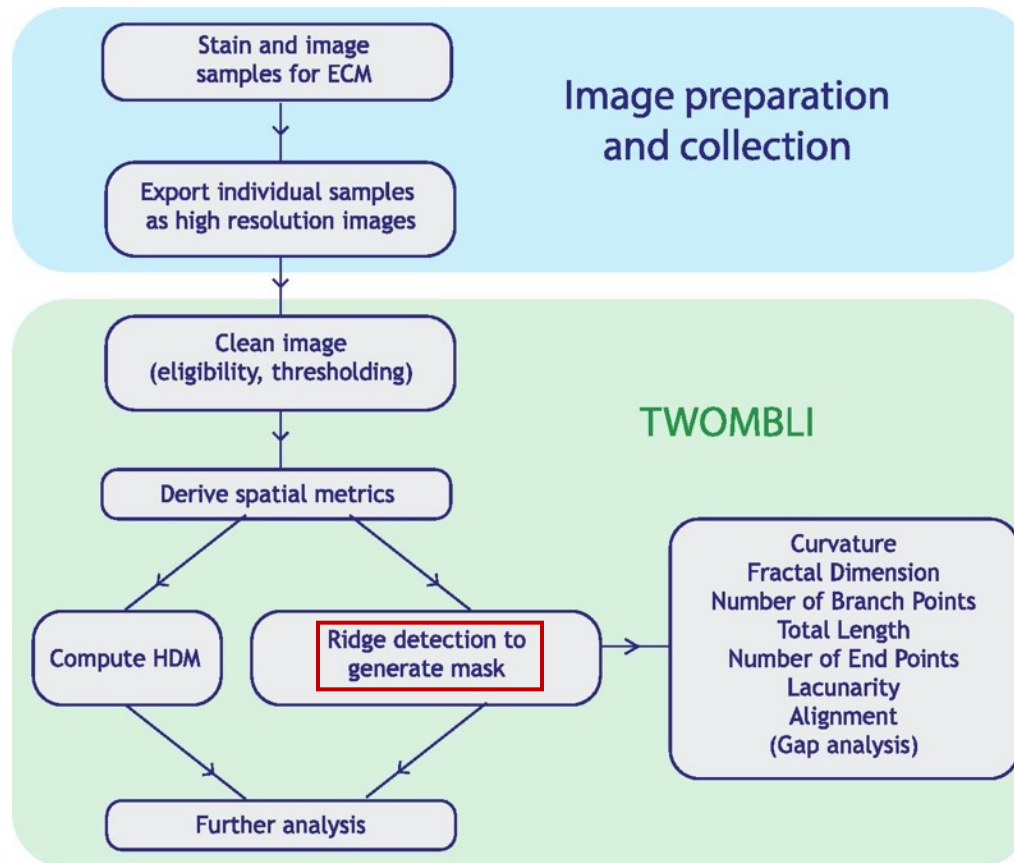
ECM feature extraction



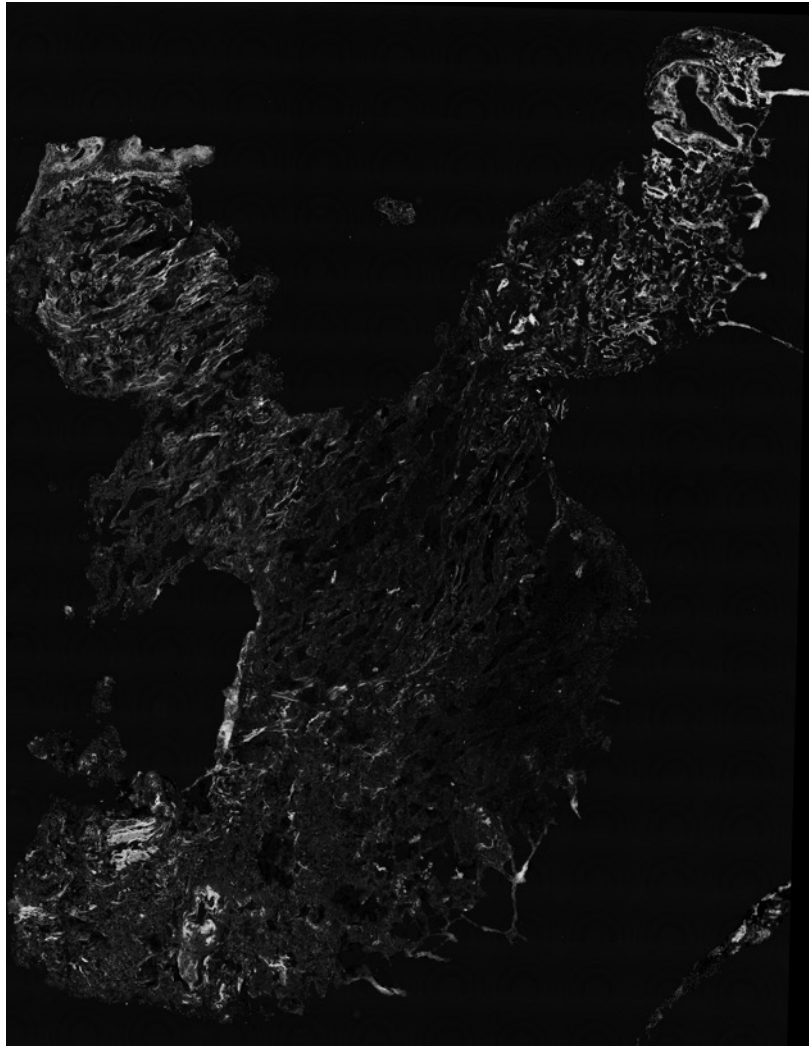
Features →

	52.828	0.732	0.1030	...
	81.648	0.193	0.0629	...
	35.056	0.306	0.5303	...
Patches ↓

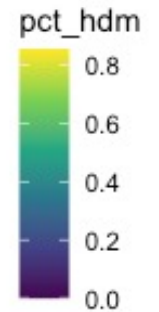
TWOMBLI overview: FIJI macro to quantify ECM patterns



Patch-based ECM features: percent high-density matrix



1803 patches



Thank you!

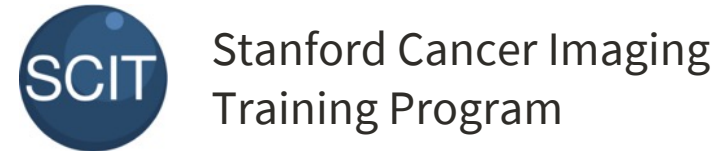
Mentors

Sylvia Plevritis, Ph.D.
Tushar Desai, M.D.



Plevritis Lab

Irene Li
Yuanyuan Li, Ph.D.
Weiruo Zhang, Ph.D.



Longaker Lab

Thoracic Surgery

Joseph Shrager, M.D.



Contact: aechiou@stanford.edu